

PORTFOLIO & PROGRAM MANAGEMENT



Easy-to-use



Robust



Functionally
Scalable



Fast to
Implement



PORTFOLIO & PROGRAM MANAGEMENT

Business Drivers



Translating Strategy Formulation into Execution

This is a top concern among business stakeholders and involves ensuring alignment between business goals and project investments at the portfolio and program levels.



Maximizing Financial Return on Project Investments

This involves ensuring that the highest impact projects and program initiatives are selected and can be reprioritized and/or deselected after being added to the pipeline as business considerations and assumptions change.



Increasing Visibility and Transparency

This refers to the project prioritization and selection process, as well as the on-going monitoring and status reporting of projects as they progress through the lifecycle, including post-delivery analysis. This is the best way to manage business stakeholder expectations.



Achieve Digital Transformation

Most organizations are undergoing some level of digital transformation. These initiatives are often managed and tracked in portfolios or as strategic programs.

"Our research confirms that the C-suite continues to be largely focused on bridging strategy formulation and execution..."

- PMI's 9th Global Project Survey | 2017

WHERE STRATEGY MEETS EXECUTION

Sciforma allows organizations to manage collections of projects as both **PORTFOLIOS** and **PROGRAMS**.

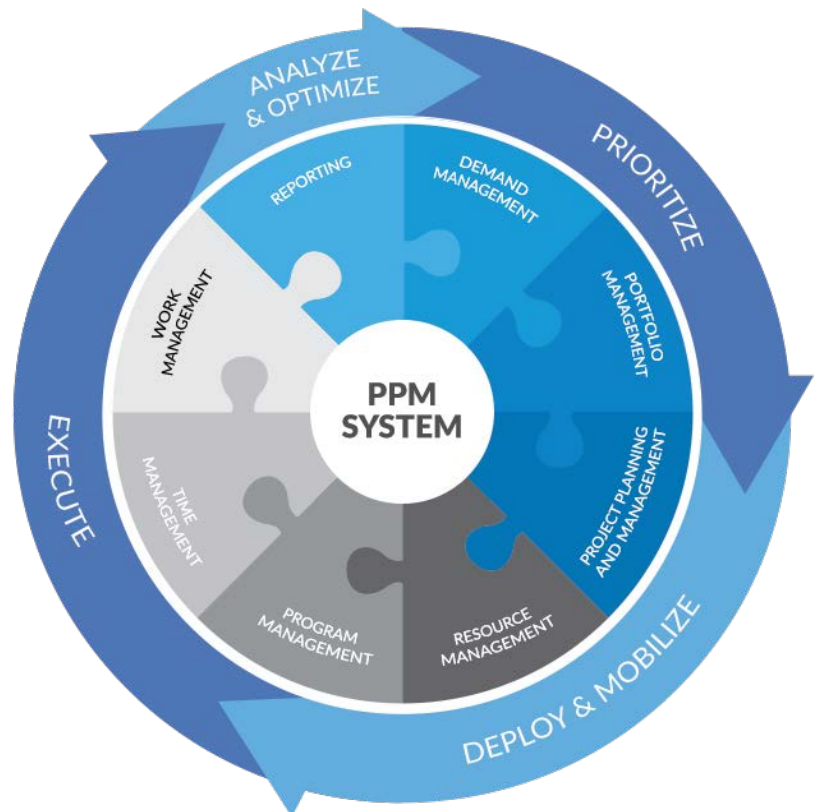
The focus of Sciforma **PORTFOLIO MANAGEMENT** is to facilitate the project selection process to ensure that investment levels in various project groupings support the strategies and priorities of the business. This includes the ability to assess the relative strengths, weaknesses, opportunities, and threats of performing a wide range of activities related to a project portfolio in order to maximize the return at any given risk. Visual/graphic dashboards and analytic reports are key to decision support and on-going portfolio monitoring and performance evaluation.

The key focus of Sciforma **PROGRAM MANAGEMENT** is to enable the creation and management of a collection of projects in support of a strategic initiative or program that can be managed somewhat independently in the system from individual projects and/or portfolios. The goal is to allow a program manager to review and manage a program of work against a specific set of strategic goals and target business outcomes. This requires the ability to see how individual projects may be dependent on others within a program; the ability to separate and provide security between owners of an individual program in the system (versus owners of projects that contribute to a program); and program-specific reporting, data rollups, and PERT charting.



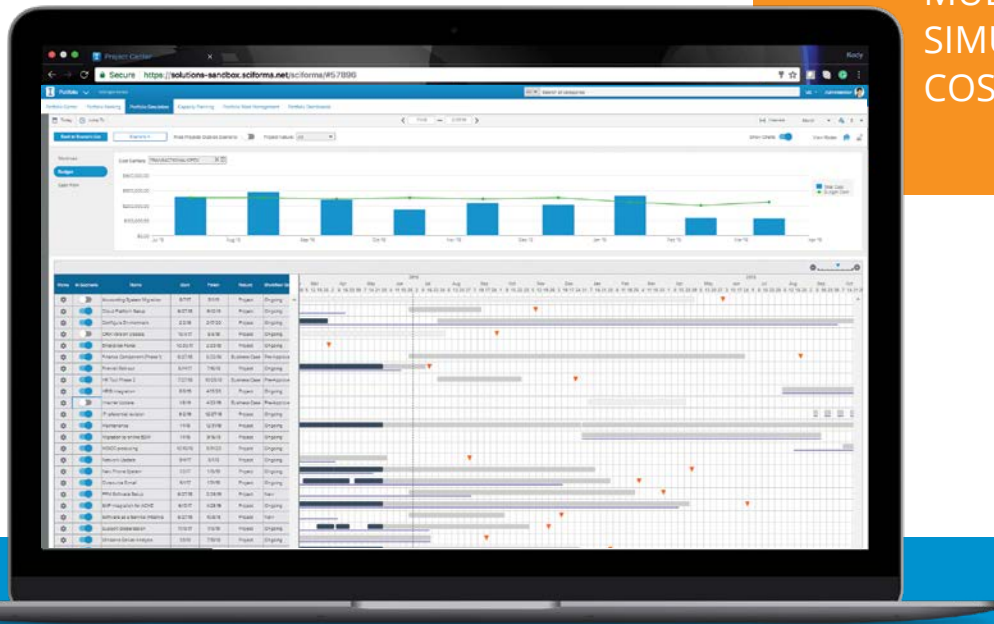
SCIFORMA PPM SOLUTION

Portfolio and Program management is a core function of the Sciforma PPM complete lifecycle solution.

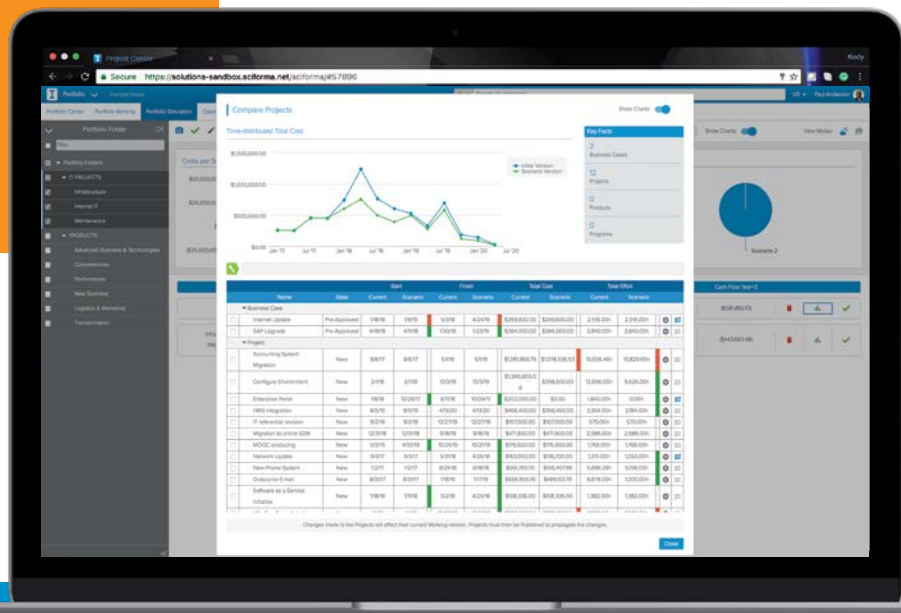


Portfolio & Program Management In Action

MULTI-PORTFOLIOS
SIMULATION: BUDGET BY
COST CENTER

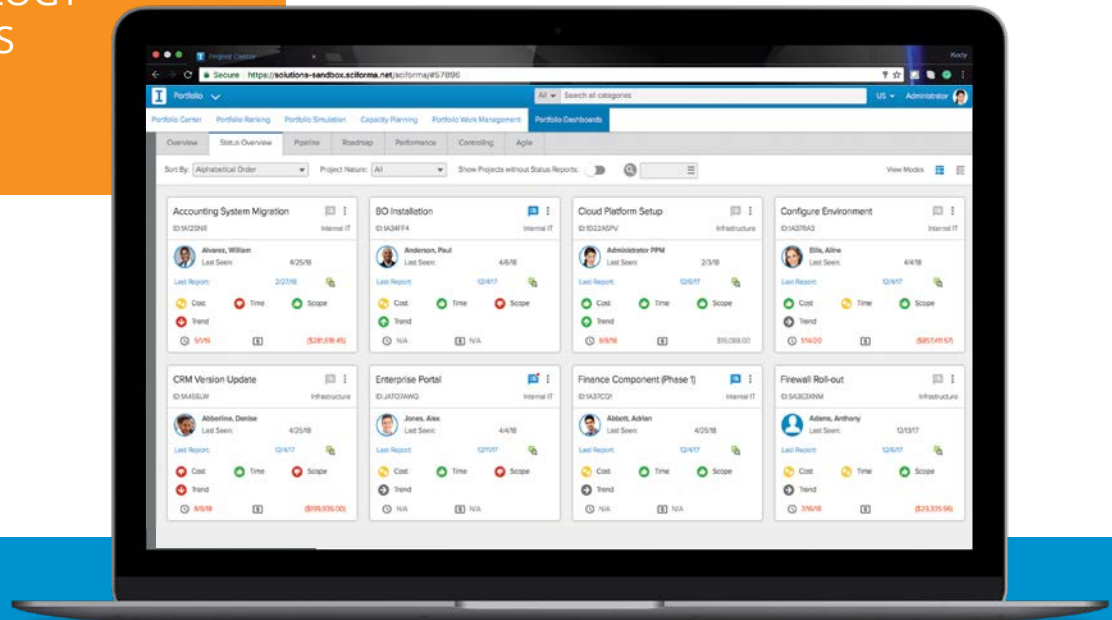


SUPPORT FOR MULTIPLE
SCENARIOS AND
COMPARING THE LIVE
SITUATION WITH THE
SCENARIO

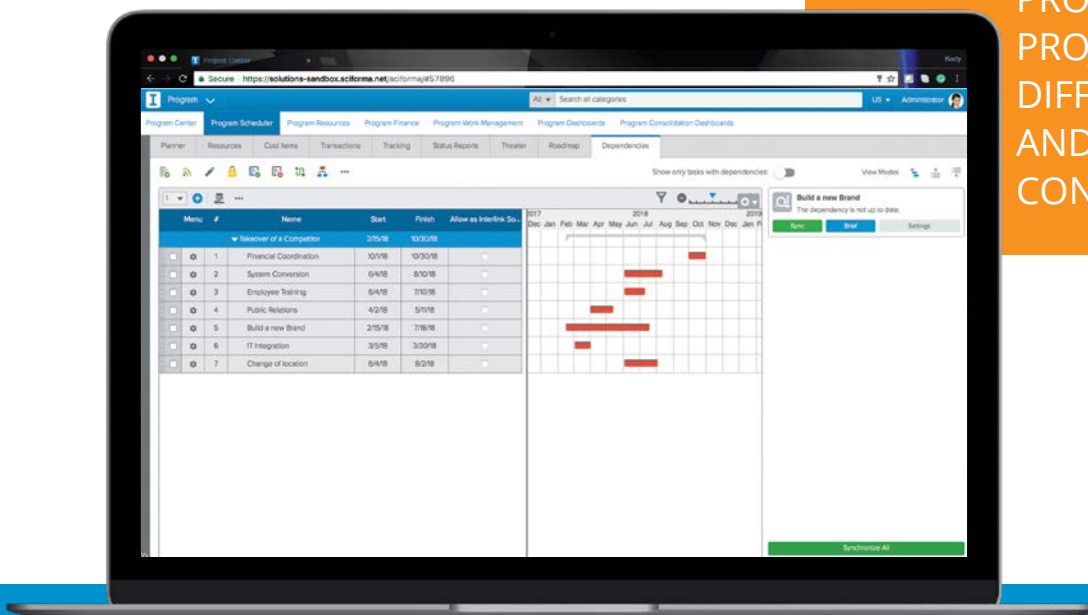


Portfolio & Program Management In Action

CROSS METHODOLOGY PORTFOLIO STATUS OVERVIEW



"SUPERVISION PROGRAM" SUPERVISES PROJECTS FROM DIFFERENT PORTFOLIOS AND BOTTOM-UP CONSOLIDATION



Key Capabilities and Features

PORTFOLIO MANAGEMENT



- ✓ Simulation of multiple scenarios across multiple portfolios: workload, budget, and cash flow.
- ✓ Ability to compare simulated scenarios and to compare them against active projects.
- ✓ Ability for users to make changes to tasks, labor assignments, cost items, etc. in the scheduler workspaces.
- ✓ Automatic updates to workload, budget, and cash flow indicators.
- ✓ Ability to temporarily “remove” a project from a scenario.
- ✓ Support for portfolio-level collaborative work management, including issues, actions, change requests, risks, lessons learned, and documents with project work item consolidation and monitoring.
- ✓ Ability to view cross-methodology portfolio status overviews.

PROGRAM MANAGEMENT



PROGRAM DRIVEN

- ✓ Ability to create a program via top-down scheduling of projects with dependencies and synchronization.
- ✓ Support for Project Connections™ with contracts (dates, budget, deliverables).
- ✓ 1-N relationships.
- ✓ Bottom-up program tracking dashboard to monitor and control project performance

SUPERVISION PROGRAM DRIVEN

- ✓ Ability for a program to “supervise” projects from different portfolios and perform high-level program planning and analysis.
- ✓ Ability to assess the overall program health and create a structured framework for managers in charge of detailed planning.
- ✓ N - N relationships.
- ✓ Bottom-up consolidation based on dependencies.



Sciforma Cloud is a powerful, reliable and Software-as-a-Service (SaaS). It can be accessed anytime, anywhere, and on any device. There is no need to procure and administer on premise server, database or firewall technology.



Want to be
On Premise?

Sciforma Virtual Appliance Solution is also available. Easy set-up, maintenance, application provisioning, availability, and convenient recovery.



“ With the portfolio management tool we were able to draw up a long-term strategic plan, break down the relevant initiatives into portfolios and evaluate the projects according to defined metrics to give us an accurate and realistic picture of all the ongoing project and the projects pipeline. ”

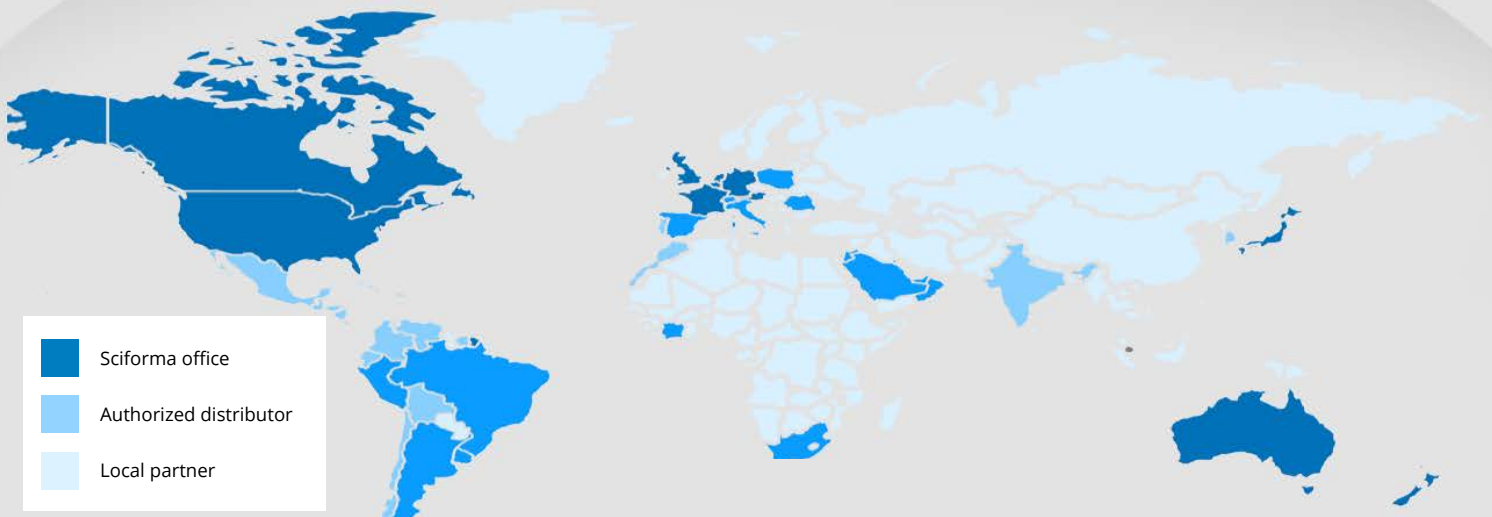


ABOUT SCIFORMA

Sciforma is an award-winning provider of portfolio and project management software. Over 3,000 customers and 300,000 users in all industries around the world use Sciforma to achieve profitable growth and strategic objectives through more efficient and effective management of project resources.

Sciforma focuses on serving Enterprise PMOs within midsize and large enterprises. It succeeds by providing a flexible platform for managing multiple project environments including IT, NPD/R&D, professional services and public sector, and functional scalability to accommodate various maturity levels. The company differentiates itself by providing the optimal balance of usability and robust functionality, as well as project team and executive-level portfolio management for organization looking for a growth path. Key customer partners include Boeing, Deutsche Telekom, EADS, Netgear, NXP, and T-Systems.

Sciforma is headquartered in the U.S. (Silicon Valley) and has offices in all geographic regions including the Americas, EMEA and Asia-Pacific, as well as a global distributor network. The service is available in seven languages.



Completely Scalable. Schedule your demo today.

www.sciforma.com • 1-800-533-9876 • sales@sciforma.com