

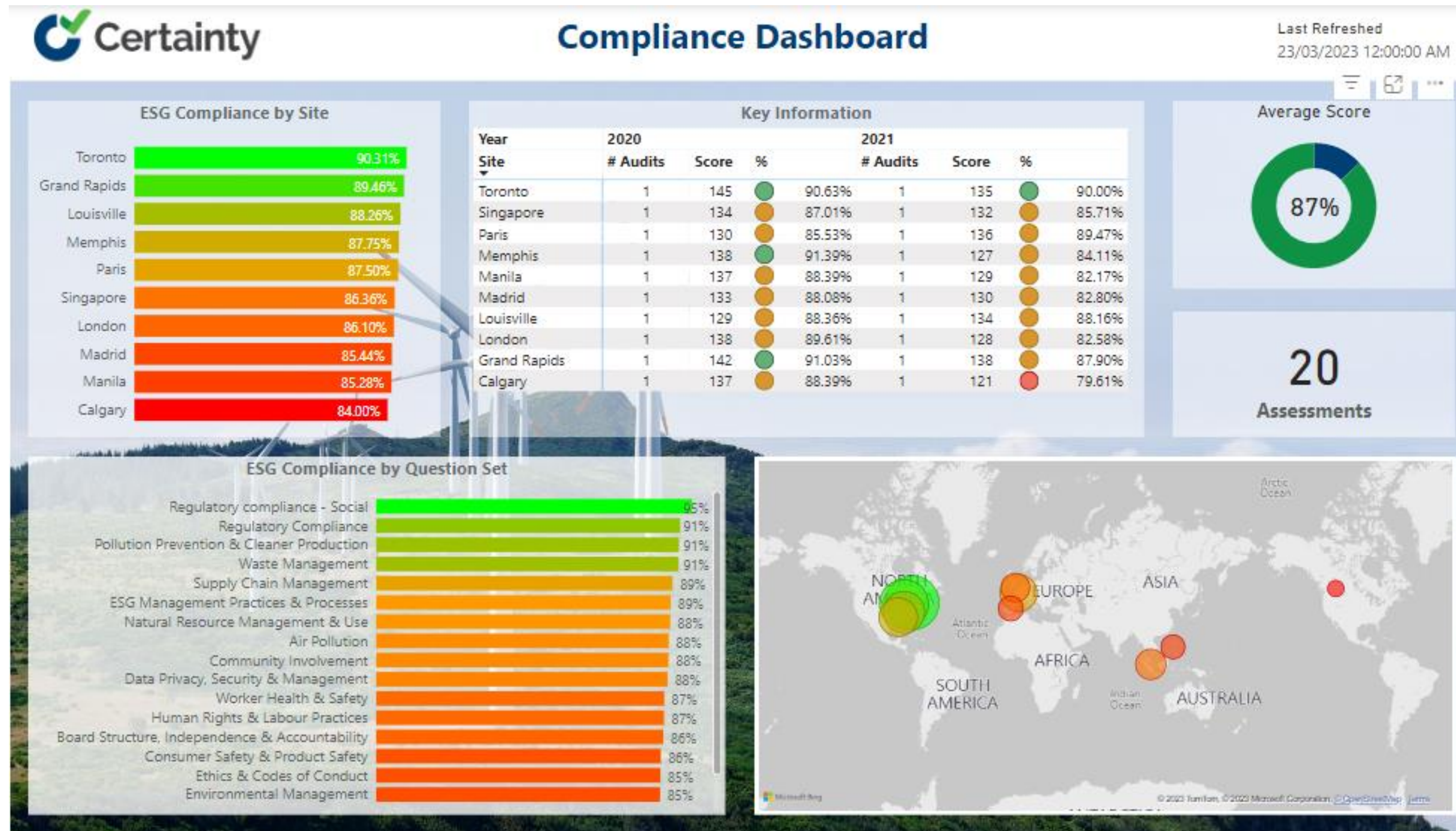


# An Enterprise-level Inspection Software Solution





# How Certainty is Used



## Web-based Solution to Easily Collect & Report Inspection Data & Manage Issues Identified

- ✓ Environmental Audits
- ✓ Safety Audits & Inspections
- ✓ Quality Assurance & Control Audits
- ✓ Supplier Compliance Audits
- ✓ And much more . . .





# Where Certainty is Used



Food & Beverage



Manufacturing



Packaging



Energy, Oil & gas



Pharmaceuticals



Construction & Engineering



Consumer Products



Agriculture



Utilities



Pulp & Paper



Retail



Hospitality

**Virtually All Sectors of the Economy**

# Who uses Certainty

Global, brand name companies

Kellogg's



OLYMPUS



Caltech

Ferrara



Mondelēz International



Longo's



brose  
Excellence in Mechatronics

Hermanson

HOLT RENFREW



ABB

EMBALLAGE  
ST-JEAN

INTERNATIONAL PAPER



EMCO CORPORATION

HUNTSMAN



# Easily Collect Inspection Data Across your Business

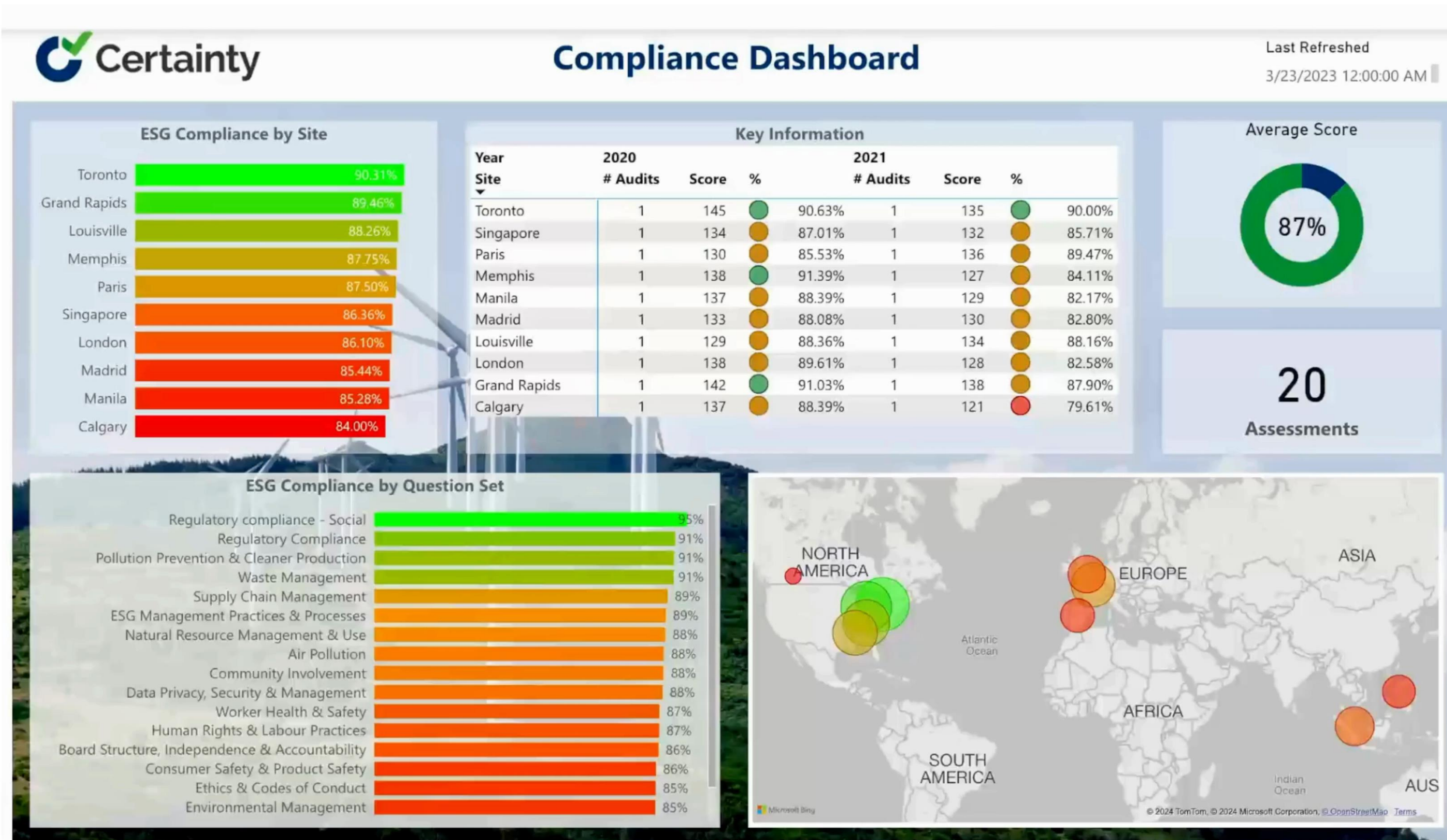
## Collect Data Using:

- ✓ Certainty App
  - Online, offline
  - iOS, Android & Windows devices
- ✓ Browser
  - Any internet-connected device
- ✓ Add photos, images, files & actions
- ✨ Use 'Certainty Vision' to complete inspections with automatic analysis of attached photos, videos, & documents





# Consistent, Comparable, Accurate Reporting



## Real Time Reporting Across Your Business

- ✓ Dashboards, system reports, business intelligence analytics
- ✓ Report by inspection, location, region, user, user group, question, answer ...
  - Virtually any metric needed!
- ✓ Export reports to various formats
  - PDF, Excel, CSV, etc.
- ✨ Automatic 'Insights' & 'Analysis' for predictive analytics, anomaly detection, pencil whipping, etc.

The image shows a smartphone screen displaying an 'ESG Checklist' application. At the top, there is a back arrow, the title 'ESG Checklist', and an information icon. Below this, the location 'London' is shown with a location pin icon, followed by the date and time 'Feb 21, 2024 12:14 PM' and the user's name 'Amanda Reconwith' with a person icon. A progress indicator shows '0%' completion. A blue header bar with a dropdown arrow contains the text 'Environmental Management'. The checklist consists of five numbered questions, each with a three-dot menu icon to its right. Each question has three response buttons: 'Yes', 'No', and 'N/A'. The questions are: 1. Does the company have and adhere to an environmental policy which sets out clear commitments and targets to improve the company's environmental footprint? 2. Does the company's environmental policy have executive and/or board-level commitment, support, and endorsement? 3. Is the company's environmental policy regularly reviewed and updated accordingly? 4. Does the company have a functional environmental management system (EMS)? 5. Has the EMS been externally certified and if so to what standard e.g. ISO 14001? At the bottom of the screen, there is a navigation bar with a left arrow, the text '1. Environment', a dropdown arrow, and a right arrow.

ESG Checklist

London

Feb 21, 2024 12:14 PM

Amanda Reconwith

0%

Environmental Management

1. Does the company have and adhere to an environmental policy which sets out clear commitments and targets to improve the company's environmental footprint?

Yes No N/A

2. Does the company's environmental policy have executive and/or board-level commitment, support, and endorsement?

Yes No N/A

3. Is the company's environmental policy regularly reviewed and updated accordingly?

Yes No N/A

4. Does the company have a functional environmental management system (EMS)?

Yes No N/A

5. Has the EMS been externally certified and if so to what standard e.g. ISO 14001?

Yes No N/A

1. Environment

# Resolve Issues Identified

## Manage Issues, Risks & Non Conformances

- ✓ Create & delegate actions on-the-fly
- ✓ Add images & files to actions
- ✓ Define rules-based action creation
- ✓ Action notifications & escalations



# An Enterprise-level Solution

## Enterprise-level Features

- ✓ Multilingual
- ✓ Configurable org structure & user access
- ✓ Notifications & alerts
- ✓ Single Sign On (SSO) & Two Factor Authentication (2FA)
- ✓ Integration & OData access for external reporting
- ✓ Custom branding





# Additional Features

## Checklist Builder

- ✓ Create your own checklists
- ✓ Checklist scoring
- ✓ Repeatable questions & question sets
- ✓ Conditional questions & question sets
- ✓ Question randomization
- ✓ Numerous answer types:
  - Text, radio buttons, dropdowns, checkboxes
  - Date picker, signature, star rating
  - Bar & QR code readers, GPS coordinates





# Additional Features

## Inspection & Action Workflows

- ✓ Configurable workflows
- ✓ Define access by step
- ✓ Hand-off push notifications

The screenshot displays a workflow configuration interface with the following structure:

- 1. Workflow Details** (Collapsed)
- 2. Workflow Steps** (Expanded)

The workflow steps are defined as follows:

- Default Step\***: Audit Initialization (Selected in dropdown)
- Transition From**: Completing The Audit
- Transition From**: Audit Review And Approval
- Transition From**: Final Audit

Below each transition point, there is a **Can Transition To** list with checkboxes for the next steps:

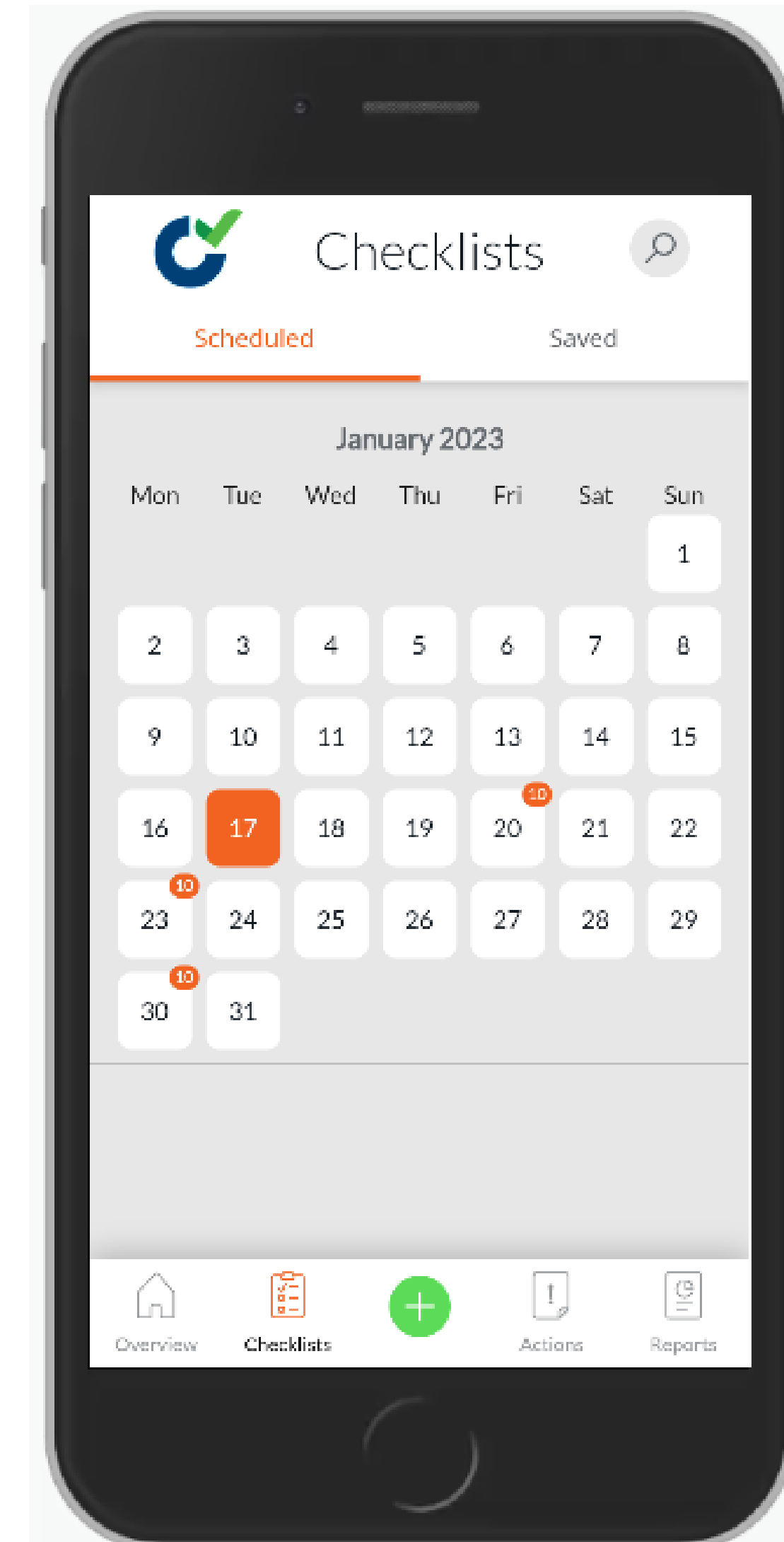
- From Completing The Audit**:
  - ☒ Completing The Audit
  - ☐ Audit Review And Approval
  - ☐ Final Audit
- From Audit Review And Approval**:
  - ☒ Audit Initialization
  - ☒ Audit Review And Approval
  - ☐ Final Audit
- From Final Audit**:
  - ☐ Audit Initialization
  - ☒ Completing The Audit
  - ☒ Final Audit
  - ☐ Audit Review And Approval



# Additional Features

## Scheduling

- ✓ Schedule by user, inspection & location
- ✓ Random, repeating, ad hoc
- ✓ Reminders & push notifications

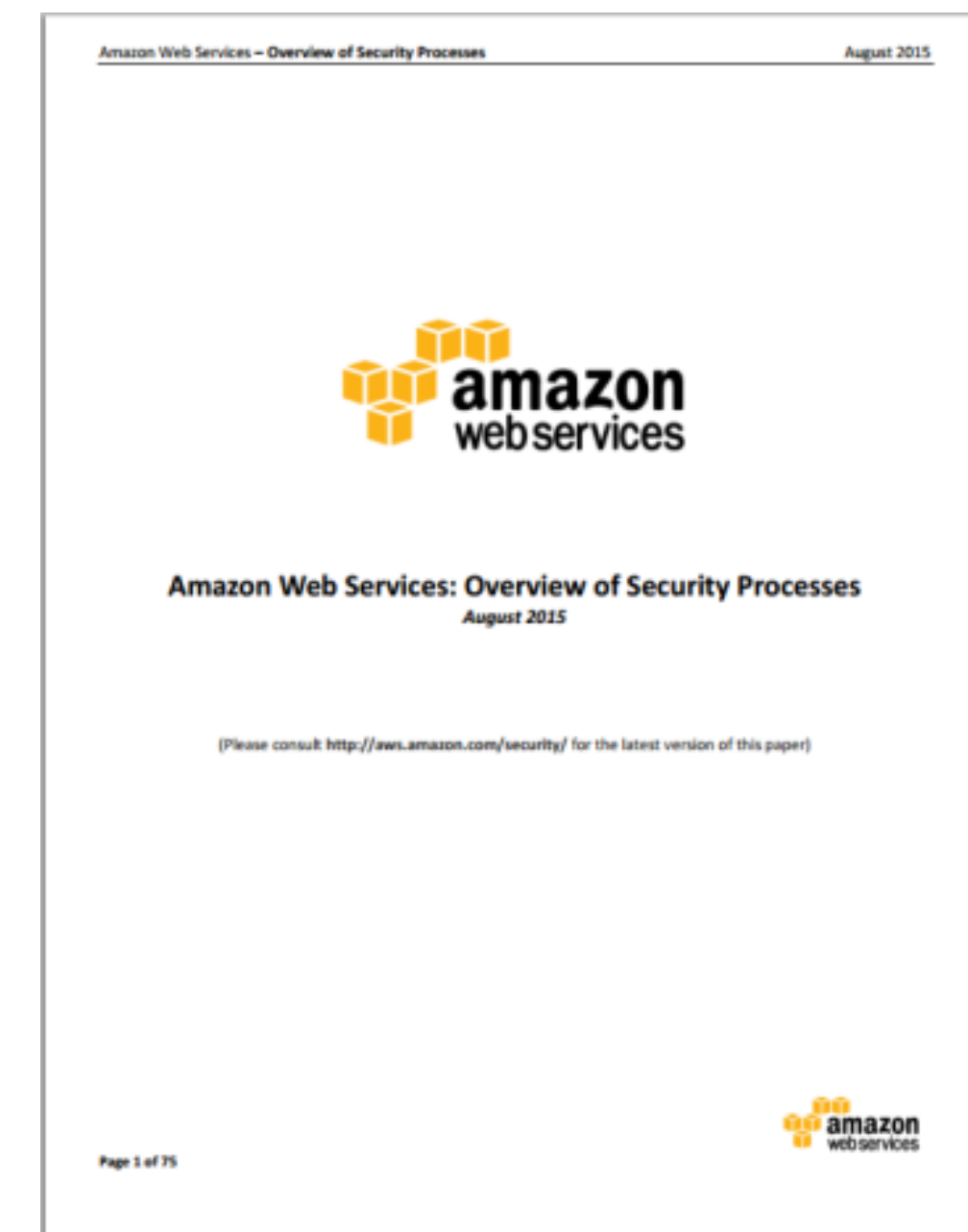




# Data Security

## Data Security is Our Primary Concern

- ✓ Host with Amazon Web Services (AWS)
- ✓ Managed with security best practices
- ✓ Compliant with internationally-recognized standards





# Pricing

## User-based Pricing

- ✓ \$18 per user per month
- ✓ Billed annually in advance
- ✓ Enterprise-level options

## Onboarding

- ✓ System set up & user training
- ✓ \$930 one-time fee

Standard	Enterprise
<b>\$18 /mo USD</b> Billed Annually	For Larger Projects & Enterprise-Level Needs
<ul style="list-style-type: none"><li>✓ Unlimited sites/locations</li><li>✓ Unlimited checklists</li><li>✓ Unlimited data</li><li>✓ System hosting</li><li>✓ Business intelligence reporting</li><li>✓ Technical support</li><li>✓ All software upgrades &amp; enhancements</li></ul>	<ul style="list-style-type: none"><li>✓ All Standard features &amp; tools</li><li>✓ Unlimited users</li><li>✓ Custom branding (optional)</li><li>✓ Single Sign On (optional)</li><li>✓ Data integration – eg. HR feeds, asset registry updates, etc.</li><li>✓ OData access for external BI reporting &amp; analytics</li><li>✓ Production &amp; test instances Priority online, email &amp; phone support</li><li>✓ Enterprise projects typically for projects &gt; 500 users</li></ul>



# Data Collection & Action Management

# Reporting & Administration







[CertaintySoftware.com](https://CertaintySoftware.com)

