





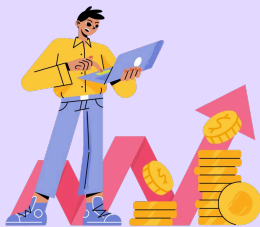


Why make the switch to Cartful Studio?

Smarter quizzes. Cleaner UX. More Revenue.

Key Cartful Studio Features

-  **On-Brand Design Control**
Your quizzes automatically match your site's style and give you full control over the look, logic, and tone. Everything stays polished and on-brand.
-  **Fast Quiz Creation**
Create and launch quizzes in minutes. Studio is fast and easy to use, so you can test ideas and make changes on the go. No developers required.
-  **Smarter Product Recommendations**
Studio quizzes guide shoppers to the right products based on their answers, which boosts intent and drives more conversions.
-  **Data That Flows into your Stack**
Each answer is saved as zero-party data and sent to tools like Klaviyo, Shopify, or your ESP. This makes targeting and segmentation smarter.
-  **No Bottlenecks for your Team**
Studio gives marketing and content teams full control to build, launch, and improve quizzes without waiting on engineering.
-  **Scalable Across Campaigns**
Manage all your quizzes, audiences, and seasonal campaigns in one place. This helps you grow your strategy without extra work.



How that translates to more revenue

Brands that switch to Cartful Studio see higher completion rates, get better product matches, and use zero-party data more effectively. That means more finished quizzes, more sales, and more repeat customers. Plus, it's easy to launch more quizzes across campaigns and touchpoints, which helps results scale fast.

Ready to see what Studio can do?

Book a 15-minute demo

 www.cartful.com