

Application Delivery. Uncomplicated

Competitive pricing, great interface, and world-class support.



Page of Contents

- 1** *Changing the Face of Application Delivery*
- 2** *What You Get Out of the Box*
- 3** *Manage your traffic on the fly*
- 4** *Deployment Made Easy*
- 5** *Under the Hood (Tech That Engineers Love)*
- 6** *Run Apps in Micro-service containers*
- 7** *Why Edgenexus*





Changing the Face of Application Delivery

Applications are everything, but keeping them fast, secure, and always available doesn't have to be rocket science (or wallet-breaking). That's where Edgenexus Application Delivery Platform (EADP) comes in.

The Edgenexus Application Delivery Controller (EdgeADC) is powered by the latest EdgeOS and delivers high-grade, reliable, and scalable Layer 4 and Layer 7 load balancing to SMEs and large enterprises alike.

The advanced functionality is aided and complemented by an easy-to-use, fully web browser-driven interface, ensuring that usage is kept 100% free of coding and hassle-free.

Edgenexus is tested and battle-hardened with many key business applications, including Enterprise VPN solutions, remote desktop, email systems, medical scanning, to customised containerised application stacks.

1

High-performance load balancing (Layer 4 & 7)

Keep applications consistently fast and available, even under heavy demand. Our intelligent load balancing ensures your users get a seamless experience, every time.

2

Built-in security with WAF Essentials

Defend your apps from modern threats without extra complexity. EdgeADC's Web Application Firewall shields your critical systems while staying simple to deploy and manage.

3

Traffic management magic with flightPATH

Fine-tune how traffic flows, redirect, rewrite, filter, and secure on the fly. All through a drag-and-drop GUI, with zero coding required.

4

Deploy apps directly on the ADC itself

Run powerful microservices like EdgeDNS, Let's Encrypt, and EdgeWAF, or even host your own containerised apps, right from the platform. It's future-proof delivery, built in.

What You Get Out of the Box



Unprecedented Ease of Use

Why overcomplicate things? With EdgeADC you'll be load balancing in minutes, thanks to a clean, intuitive interface designed for humans, not hardcore coders.



Web Acceleration

Make your apps feel instantly responsive. From smarter caching to compression, EdgeADC helps your web traffic fly, no matter how heavy the load.



Automatic Configuration

Skip the manual setup headaches. Pre-built templates and auto-configuration options mean your services are ready to run almost instantly.



Compression & Caching

Serve content faster and reduce bandwidth at the same time. Dynamic compression and smart caching ensure your users always get the quickest experience possible.



Instant Clustering

High availability without the drama. Add new nodes, cluster instantly, and keep traffic flowing, even if something goes bump in the night.



Server Health Checking

Never let a dead server drag you down. EdgeADC constantly monitors server health and routes traffic only where it can perform.



Layer 4/7 Load Balancing

Whether it's network-level traffic or application-specific intelligence, EdgeADC balances with precision, keeping apps both reliable and efficient.



Global Server Load Balancing (GSLB)

Disaster recovery built in. Distribute traffic across multiple sites worldwide for resilience, uptime, and the best user experience anywhere.



Pre-Authentication & Single Sign-On

Keep the bad guys out and let the right people in, quickly. With built-in pre-authentication and SSO, your apps stay secure without slowing users down.



Intuitive GUI

Click, drag, done. Manage complex traffic rules and configurations through a browser-based interface that's refreshingly simple.



Reverse Proxy

Protect and streamline application delivery with reverse proxying that hides your backend infrastructure while boosting performance and security.



flightPATH Traffic Management

Rewrite, redirect, filter, and shape traffic in real time. flightPATH gives you ultimate control over requests and responses, without writing a single line of code.

**Web Application Firewall (WAF)**

Shield your apps from the OWASP Top 10 and beyond. EdgeADC's WAF adds an essential security layer, keeping attacks out while business keeps flowing.

**SSL Offload & Re-Encryption**

Secure connections without the performance hit. EdgeADC handles SSL/TLS offloading and re-encryption with ease, freeing up your servers to do what they do best.

flightPATH - Manage your traffic on the fly

One of the most powerful features of the EdgeADC is flightPATH, a traffic management technology that allows you to manipulate and direct requests and responses on the fly based on easy-to-set-up conditions.

Examples of flightPATH rules include:

- Redirect users based on criteris such as hostname, geography or source IP
- Blank out credit card numbers
- Mask sensitive information
- Change the content of headers and cookies
- Automatically add content expiry dates
- Change the BODY content of pages based on criteria
- Redirect based on language
- Automatically insert the code for analytics such as Google
- Filter or redirect users based on the source network, etc. using REGEX

flightPATH rules can range from the sublimely simple to the most complex and are all authored without a single line of coding. Just use EdgeADC's GUI to write and test your rules in real-time.

Allocation and deployment of flightPATH rulesto virtual services is a simple drag-and-drop action, cementing the truly easy-to-use nature of the EdgeADC. And all of this and more, with ZERO coding.



Deployment Made Easy

Deploy Anywhere. Scale Everywhere.

There are various platforms upon which users choose to deploy their applications. Some are on-premise, others are based in cloud infrastructure, some are physical, and others are virtualization.

No matter where you wish to deploy, the EdgeADC can work to deliver an outstanding application delivery experience, improving security, scalability, reliability, and the enduser experience.

The EdgeADC is available to run on all the popular virtualization platforms and HPE baremetal servers using our certified image.

Installation and initial configuration of the EdgeADC take just a couple of minutes, allowing you to create your first load balanced setup in less than 2 minutes.

We keep it easy and simple.

VIRTUALIZATION



NUTANIX



CLOUD



HARDWARE





Under the Hood (Tech That Engineers Love)

SERVER LOAD BALANCING

- Layer 4 – 7 Load Balancing
- Layer 7 Application Persistence (aka. Persistence / Sticky Sessions / Cookie Based)
- Manual Server Weighting
- Automatic Server Weighting
- Reverse Proxy
- UDP Full Proxy
- Layer 7 Content Switching
- Active – Passive High Availability Mode
- Active – Active High Availability Mode
- Cross Data Centre Redundancy
- N+X Clustering
- Configurable Connection Draining
- Standby Server (aka Server of Last Resort)

GLOBAL SERVER LOAD BALANCING (ADDITIONAL LICENCE)

- Disaster Recovery for your data centers
- Active-Active:
- Round Robin
- Weighted
- Geo-Location
- Custom Location
- GSLB Replication

LOAD BALANCING METHODS

- Fastest Server
- Least Connections
- Round Robin
- IP Bound
- IP List Based
- Cookie Based
- Classic ASP Session Cookie
- ASP.NET Session Cookie
- JSP Session Cookie
- JAX-WS Session Cookie
- PHP Session Cookie
- Weighted Round Robin
- Weighted Least Connections

SERVER HEALTH CHECKING

- Customisable Health Checks
- Simple HTTP
- Full HTTP (Layer 7)
- TCP Connect
- Out of Band Health Check
- DICOM
- RDP
- Ping
- Multiple Server Health Checks Per Service
- New HTTPS Health Check
- Redis Health Check
- Radius Health Check
- DNS Health Check
- Upload Custom Health Checks
- Extra Setting for Custom Health Checks

NETWORKING

- IPV6 Support
- IPV6 > IPV4 Proxy
- VLAN Support
- Single or Multi Interface Configuration
- Choice of Interfaces (from 4x1GbE up to 4x10GbE or 8x1GbE)
- Support for S-NAT, NAT and PAT
- Static Routing With Default Gateway
- Unrestricted Interfaces (Virtual)
- High-Performance Virtual Network Drives (Virtual)
- Multiple DNS Server Support

CONNECTIVITY METHODS

- Reverse Proxy / Direct Server Return
- Gateway Mode / NAT Mode
- High Performance Layer 4 Load Balancing

SECURITY

- Web Application Firewall (Additional Licence)
- Pre-Authentication (ADFS/LDAP/SAML/RADIUS)
- NTLM / Basic Support
- Form or Basic Authentication
- Single Sign On (SSO)
- Microsoft TMG Replacement
- Upload Custom Forms From GUI
- Custom Login with Configurable Welcome Message
- Authentication Protocol LDAPS Servers
- Security Logging
- Login Timeout
- Multiple Conditions

LINK INTERFACE BONDING

- 802.3ad
- Round Robin
- Active / Passive
- Broadcast
- Adaptive
- Transmit
- Balance-XOR

SSL

- High-Performance, Unrestricted SSL Offload
- Easy-to-Use SSL Management
- AES Hardware SSL Acceleration
- SSL Pass-Through
- SSL Re-Encryption
- Certificate Signing Request (CSR) Generation and Renewal
- Simple Certificate Import / Export inc PKCS12
- Self-Signed Certificate Creation
- Support For Multiple Keys Inc: 1024, 2048, 4096
- Intermediate Certificate Support with Reordering
- Support for Server Alternative Names
- Support for Wildcard SSL Certificates
- SSL Certificate Chaining
- Support for TLS 1.2 / TLS 1.3
- Customisable Ciphers
- Full Support for Server Name Indication (SNI)
- Multiple Certificates Per Service for SNI

CLOUD BASED SERVICES ***

- Secure Interface From ADC to Cloud Services
- Cloud & Download for Software Updates

FLIGHTPATH TRAFFIC MANAGEMENT

- HTTP / HTTPS Traffic Manipulation
- Intuitive, Simple To Use
- Drag & Drop Rule Builder
- Layer 7 Content Switching
- Dynamic Routing
- Content Filtering
- Fully Customisable / Configurable
- Pre-Defined Rule Base
- Log and Alert
- Geo Location
- Selectable, Simple Match Conditions (inc does / does not: 'start with', 'end with' 'contain', 'equals') or
- Powerful Regular Expression Engine
- Extract Response Cookie Value

Examples:

- Block IPs / Networks
- Redirect to Secure Website
- Rewrite URLs
- Replace Sensitive Info (Blank Credit Card Details)
- Browser Detection
- Device Detection
- Body Rewrite
- Prevent SQL Injections
- Prevent Cross-Site Scripting
- Add Google Analytics
- Redirect User Based on Country
- Certified for Key Applications

CLUSTERING / HIGH AVAILABILITY

- Active-Passive / Active-Active
- Broadcast Discovery / Unicast / Hybrid
- Automatic Replication (Cluster mode only)

ACCELERATION

Compression

- Dynamic HTTP Compression
- Configurable Rule Base

Caching

- RAM-Based Caching with Disc Backup
- Automatic and Configurable Client-Side Caching
- Multiple Caching Profiles
- Auto-Detect and Prioritise Popular Content
- Simple Editing of Cache Rulebase
- Fully Configurable via GUI

Connection Management

- Connection Pooling / Multiplexing
- Connection Limiting
- Customisable Server Too Busy Page

MANAGEMENT & REPORTING

- GUI and Configuration
- Secure Web-Based GUI
- Customisable Dashboard
- Configurable Widgets
- Automatic EdgeADC Device Discovery
- jetPACK Application Templates (Auto-configuration)
- Clone Services
- Auto Complete
- Support for Slash Notation
- Configuration Back Up
- Software Updates
- Check Cloud Service for Software Updates
- Encrypted Software Updates
- Simple Software Update Via GUI
- Management and Monitoring
- Selectable SSL Certificate & Secure Port
- Full SNMP Monitoring (V1,2 &3)
- Command Line Interface (CLI)
- Email Alerting
- Real Time Stats
- Status Page with Live Individual Server Connections

Run Apps in Micro-service containers

One of the unique features of the EdgeADC is the ability to run applications on the platform. A variety of Apps are available from the Edgenexus App Store; many are free, while others provide you with the same affordable price points that Edgenexus users enjoy.

When installed, apps operate highly securely and can seamlessly integrate with the host via the EdgeOS Rest API. Apps currently available include the EdgeWAF, EdgeGSLB, Dell-ECS Configurator, Let's Encrypt SSL Manager, and more.

You can also deploy your own containerised apps to EdgeADC's application delivery platform, thus future-proofing your investment.

Why Edgenexus

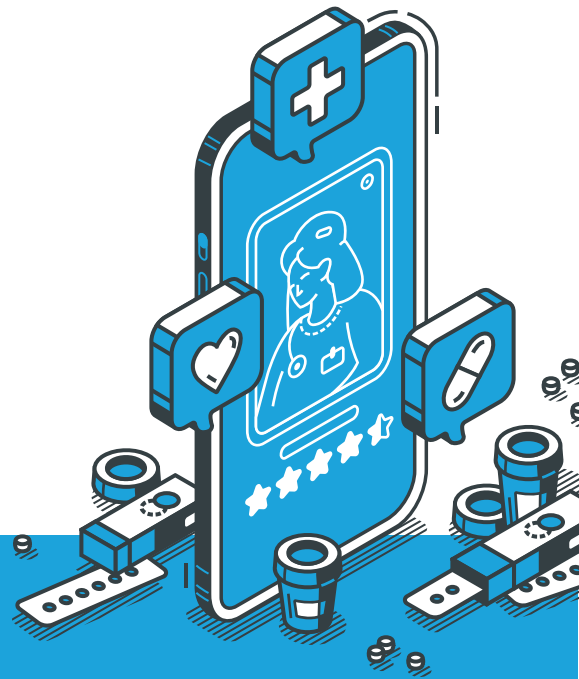
Easy. Powerful. Affordable.

We are changing the face of application delivery controllers with a high performance, innovative feature set, unbelievable ease of use under a cost effective, flexible licensing model.

At Edgenexus, we believe advanced application delivery shouldn't be reserved for companies with deep pockets and armies of engineers.

That's why we've built a platform that puts enterprise-grade features within everyone's reach, from SMEs to global enterprises. With simplicity at the core, scalability baked in, and a licensing model that won't make your CFO cry,

Edgenexus is the smarter choice for organisations that want to deliver applications brilliantly, without the baggage.



1 Ridiculously Easy to Use

Protect your applications from common threats with out-of-the-box web application firewall policies.

2 Performance That Scales

Whether on-prem, in the cloud, or hybrid, FdgeADC grows with your needs.

3 Fair Licensing

Transparent, cost-effective models that don't punish growth.

Ready for stress-free application delivery?

At Edgenexus, we didn't stop at simple traffic distribution. We built the most intuitive, powerful Application Delivery Controller on the market, one that makes infrastructure feel friendly again.

There's only one way to find out: take Edgenexus for a spin.

Scan the QR code to get started or visit: edgenexus.io



Contact	Phone	Email
Jay Savoor <small>TECHNICAL PRE-SALES LEAD</small>	0808 1645876	jsavoor@edgenexus.io
Max Canham <small>SALES DIRECTOR</small>	0808 1645876	mcanham@edgenexus.io
Louise Ede <small>CLIENT SUCCESS MANAGER</small>	0808 1645876	lede@edgenexus.io
General Enquiries	0808 1645876	sales@edgenexus.io