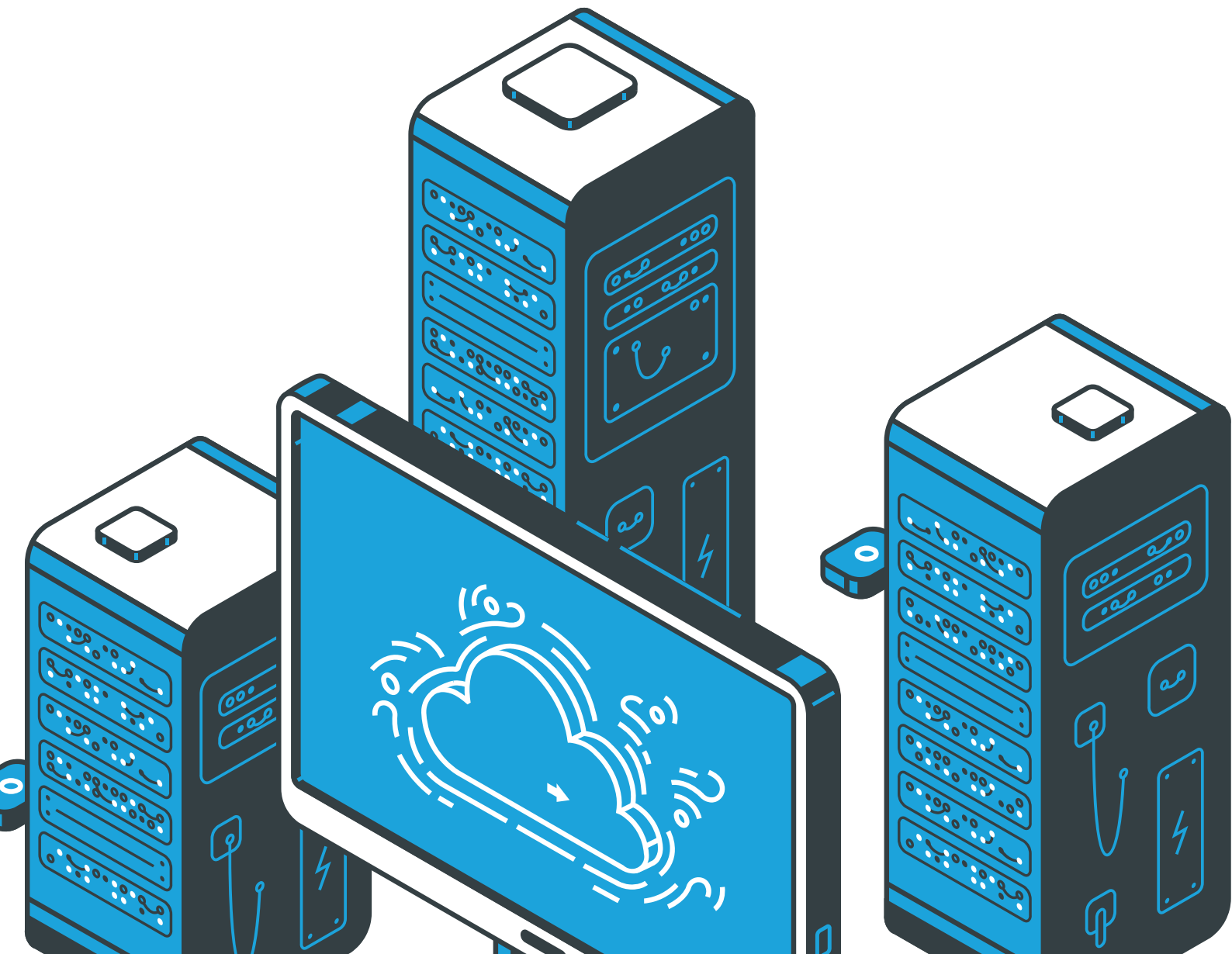


# Application delivery that feels right at home in a Nutanix world.

Smarter, faster, and built to fit right into your hypervisor stack.



# Native integration. Instant performance.

## **Deploy fast. Really fast.**

EdgeADC installs as a virtual appliance on Nutanix AHV and goes from zero to traffic-balancing in minutes. A browser-based setup wizard guides you through your first service, no code, no guesswork.

Because it fits directly into Nutanix workflows, your teams stay productive using the tools they already know. Faster deployment. Fewer “where’s that setting?” moments. More time for the apps that matter.

# High-Performance load balancing

## **Optimised for Nutanix cluster efficiency.**

Layer 4–7 load balancing keeps every app feeling fast, even under peak demand.

Multiple algorithms and smart health checks direct traffic to the strongest nodes, while persistence options support sticky sessions.

The result? A smooth user experience and a more efficient use of the Nutanix horsepower you’ve already invested in.

# Security built into delivery

## **Secure access at the edge of your Nutanix apps.**

EdgeADC helps simplify your security stack. SSL Offload, Re-Encryption, and Pre-Authentication reduce backend load and control access before requests ever reach your servers.

Add an optional WAF module for extra protection, all managed in one GUI, all without code. Because “secure by design” shouldn’t mean “complex by default.”

# Scale when the moment arrives

## Expandable inside the AHV ecosystem.

Growth on Nutanix clusters is easy, EdgeADC scales the same way.

Add appliances for Active-Active or Active-Passive HA, N+X clustering, and config replication with seamless failover. No downtime. No re-architecture. Just smooth, stress-free scaling when your business takes off.

# flightPATH™ automation

## Traffic logic that adapts to live conditions.

Our visual rule builder lets you shape traffic like a pro, without writing a line of code. Rewrite URLs. Filter by network. Redirect by geography or language. Mask data or block bad patterns.

Test live and change instantly when conditions shift. That's intelligent automation, right at the edge.



# Operational clarity in one place

## Visibility into every Nutanix-hosted service.

The secure web GUI gives real-time insight into performance, connections, health checks, and alerts.

SNMP integration ties neatly into your existing monitoring tools, while dashboard widgets let each role see what matters most. It's like having headlights on the road instead of reacting after the bump.

# Ready for today's architectures

## Built for containers, VMs, and everything in between

Whether your apps are modern microservices or refreshed legacy systems, EdgeADC handles the traffic with intelligence. Built-in App Store support includes containerised services like EdgeDNS and let's Encrypt, or deploy your own internal tools directly on the platform.

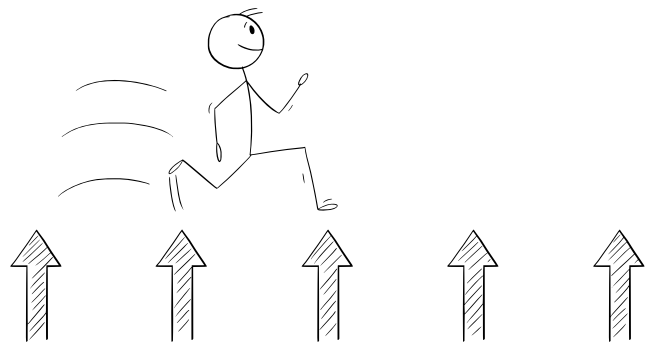
A future-friendly approach, minus the disruption.

# Predictable, cost-friendly licensing

## Fits the Nutanix scale-out model.

No per-connection maths. No hidden unlocks. No invoices for "basic" features.

EdgeADC keeps costs transparent and budget-friendly, especially when adding appliances for resilience across AHV clusters. Finance smiles. Engineers breathe.



# Resilience aligned with Nutanix HA

## Always-on availability for critical apps.

High availability and cross-site redundancy keep users connected, even during reboots or host failures. Connection draining and standby modes ensure maintenance doesn't interrupt service.

Reliability stops being an aspiration and starts being the default.



# A Friendly UI People Actually Enjoy

**Designed for humans, not just specialists.**

Drag-and-drop configuration. jetPACK templates. Auto-complete.

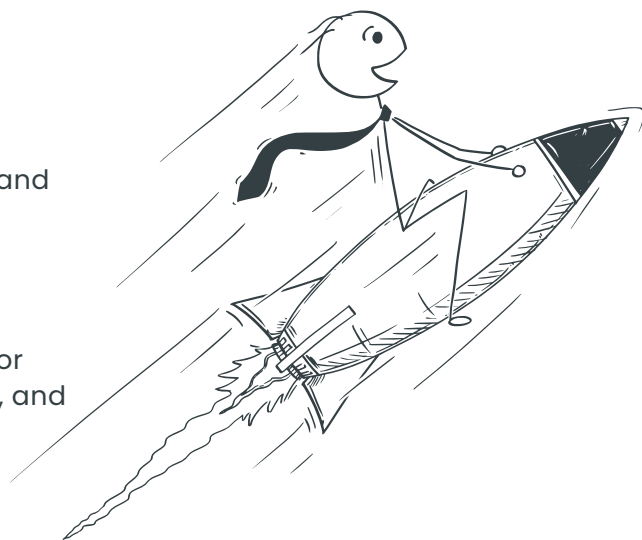
A clean, intuitive layout that helps you do the right thing fast, so even non-network experts can contribute confidently. When tools feel approachable, teams deliver change faster and fewer things go sideways.

Quietly, that's a big deal.

## Built for Nutanix. Optimised for You.

The partnership between Nutanix and Edgenexus is a natural fit for modern, agile IT environments. Nutanix delivers the power of hyperconverged infrastructure and AHV virtualisation, while Edgenexus brings intelligent, application-aware load balancing that's simple to deploy, manage, and scale.

Together, they create a powerful, seamless solution for delivering applications with high availability, security, and performance, without the complexity of traditional architectures. It's cloud-smart, hypervisor-native application delivery, done right.



# Key Specifications

Category	Specification	Details / Notes
Platform Support	Nutanix AHV (AOS 5.10+)	Native virtual appliance deployment (OVA / QCOW2 formats)
Deployment Type	Virtual Appliance	Runs directly on AHV, no external dependencies
Setup Time	Under 10 minutes	Guided browser-based configuration; no CLI or coding required
Performance	Up to 10 Gbps per instance	Scales horizontally with Nutanix clusters for higher throughput
Load Balancing Modes	Layer 4 & Layer 7	Multiple algorithms (round robin, least connections, adaptive)
High Availability	Active-Active / Active-Passive	Supports N+X clustering, config replication, and seamless failover
Traffic Management	flightPATH™ Visual Builder	Create and test advanced traffic rules with drag-and-drop logic
App Store Integration	EdgeDNS, Let's Encrypt, etc.	Deploy containerised or internal apps directly on the platform