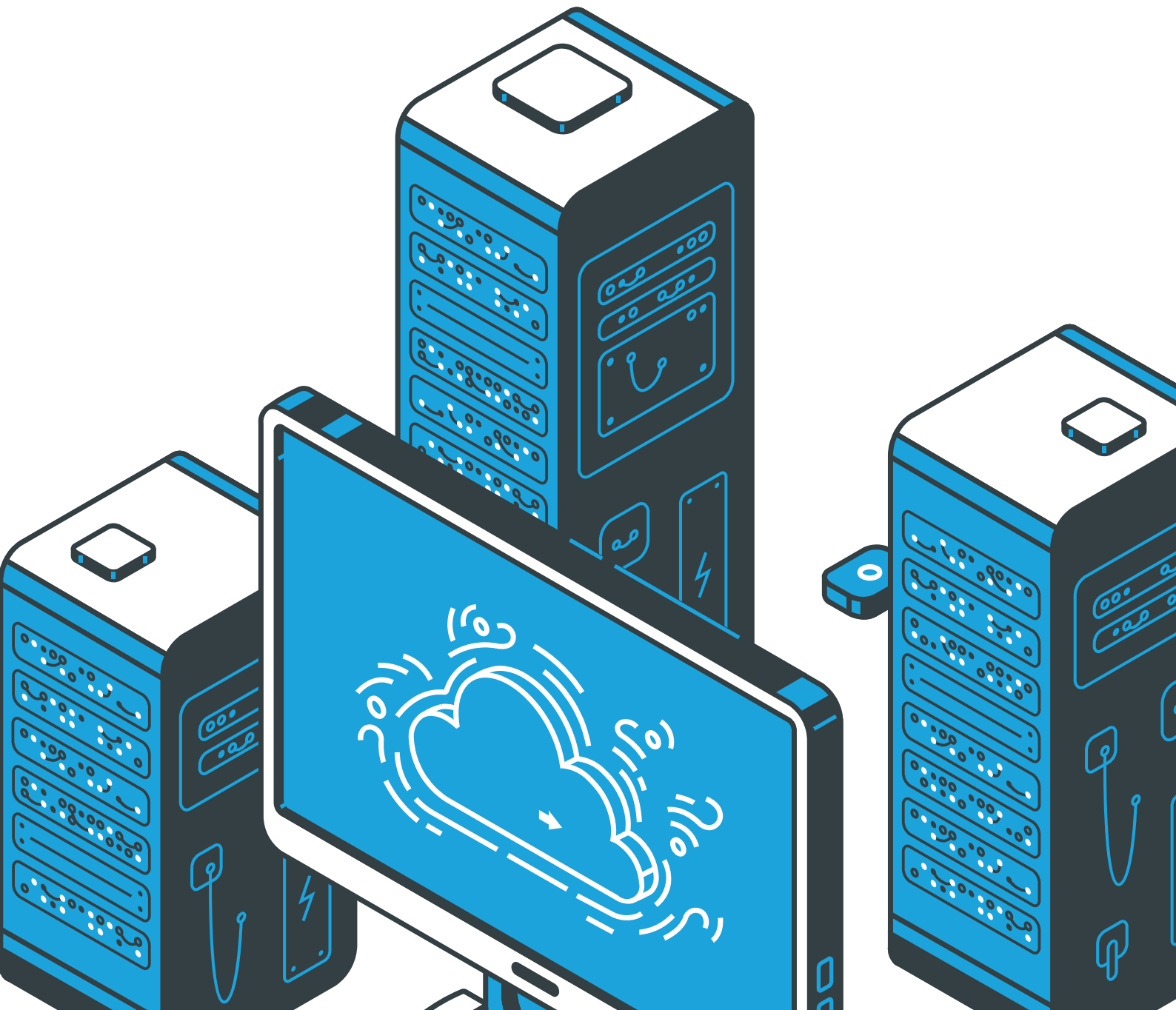


# Edgenexus + Parallels RAS

High Availability. Simplified.

Harden, scale, and automate your Parallels environments with an enterprise-grade Application Delivery Controller (ADC).



# Why High Availability Matters

Your users depend on uninterrupted access to virtual apps and desktops. Edgenexus keeps Parallels RAS always-on by preventing the pain points that cause downtime:

- ✓ Outages at the gateway, portal, or broker = session drops and ticket floods.
- ✓ Patching and certificate renewals shouldn't interrupt live sessions.
- ✓ Multi-site continuity ensures productivity even during datacenter or ISP incidents.

## Where Edgenexus Fits

### **Traffic flow:**

Internet → Edgenexus ADC → Parallels Secure Gateways → RDSH / VDI

Edgenexus sits in front of your Parallels Secure Gateways to:

Centralize TLS, traffic policy, and health-based routing

Deliver local HA clustering and multi-site GSLB continuity

Secure and optimize all inbound connections with L7 intelligence

## Fast ROI

- ✓ Fewer incidents during maintenance or failover.
- ✓ Change routing or security policy in minutes, no app rework.
- ✓ One ADC for VDI + web + apps + APIs = streamlined ops and lower cost.

# Quick Start

## 1 Deploy Your Front-End

Front-end Parallels Secure Gateways with an Edgenexus HTTPS VIP to centralize traffic management and security.

## 2 Validate Application Health

Enable deep, intelligent health checks that test full login or token flows, not just port-up status.

## 3 Built in Resilience

Turn on clustering for local HA and add Global Server Load Balancing (GSLB) for site-level continuity.

## 4 Automate Everything

Use the REST API to automate backups, configuration changes, and deployments across environments.

# Capabilities That Matter

- ✓ **L4-L7 Proxying:** HTTP/S, TCP/UDP with RDP-aware persistence.
- ✓ **Smart Health Checks:** Validate real app behavior (token/logon/content).
- ✓ **SSL Offload & Lifecycle:** Simplify certificate management and SNI.
- ✓ **Pre-Auth & SSO:** LDAP, RADIUS, SAML, Kerberos with Forms support.
- ✓ **flightPATH™ L7 Rules:** Steer traffic by URL, header, device, or health and more.
- ✓ **GSLB Add-On:** Site failover and geo-proximity routing.
- ✓ **HA Clustering:** VIP/ADC failover removes single points of failure.
- ✓ **Automation-First:** REST API and ready-made scripts for deployment.
- ✓ **VM-Based Rollout:** OVA/OVF images with first-boot config.