



Leaders in Marine Manufacturing

Cloud-Based No-Code Shop Floor Apps and Reporting

DEPLOYED IN MARINE SINCE 2003
MARINE LAUNCH PACKAGE FOR QUICK STARTUP

MILESTONE



Users Love Us



FALL 2025



Best Support
MID-MARKET

SPRING 2025



Easiest Setup

FALL 2025



High Performer

FALL 2025



Easiest To Do Business With



Easiest To Do Business With

SUMMER

2024



Easiest To Do Business With

Mid-Market

SUMMER 2024



High Performer

SUMMER

2024



High Performer

Mid-Market

SUMMER 2024

SPRING 2025



Easiest To Do Business With



Easiest To Do Business With

Mid-Market

SPRING 2024



Easiest To Do Business With

WINTER

2024



High Performer

WINTER

2024



Easiest Setup

WINTER

2025



Easiest To Do Business With

SUMMER

2023



Fastest Implementation

Mid-Market

SUMMER 2023



High Performer

Mid-Market

SUMMER 2023



High Performer

FALL

2023



Easiest To Do Business With

FALL

2023



Fastest Implementation

Mid-Market

FALL 2023



Easiest To Do Business With

Mid-Market

WINTER 2023



Easiest To Do Business With

WINTER

2023



High Performer

WINTER

2025



Best Support

Mid-Market

WINTER 2023



High Performer

Mid-Market

SPRING 2023



Easiest To Do Business With

SPRING

2024



High Performer

SPRING

2024



Easiest To Do Business With

Mid-Market

SPRING 2023



Easiest To Do Business With

SPRING

2023



High Performer

SPRING

2023



Fastest Implementation

Mid-Market

SPRING 2023



High Performer

Mid-Market

SPRING 2024

Company Introduction

Industry leading manufacturers from custom specialty vehicles to high volume part suppliers rely on AIMSCO's cloud based, no-code platform to build and deploy shop floor quality and production tracking apps with agility, control, and low cost of ownership

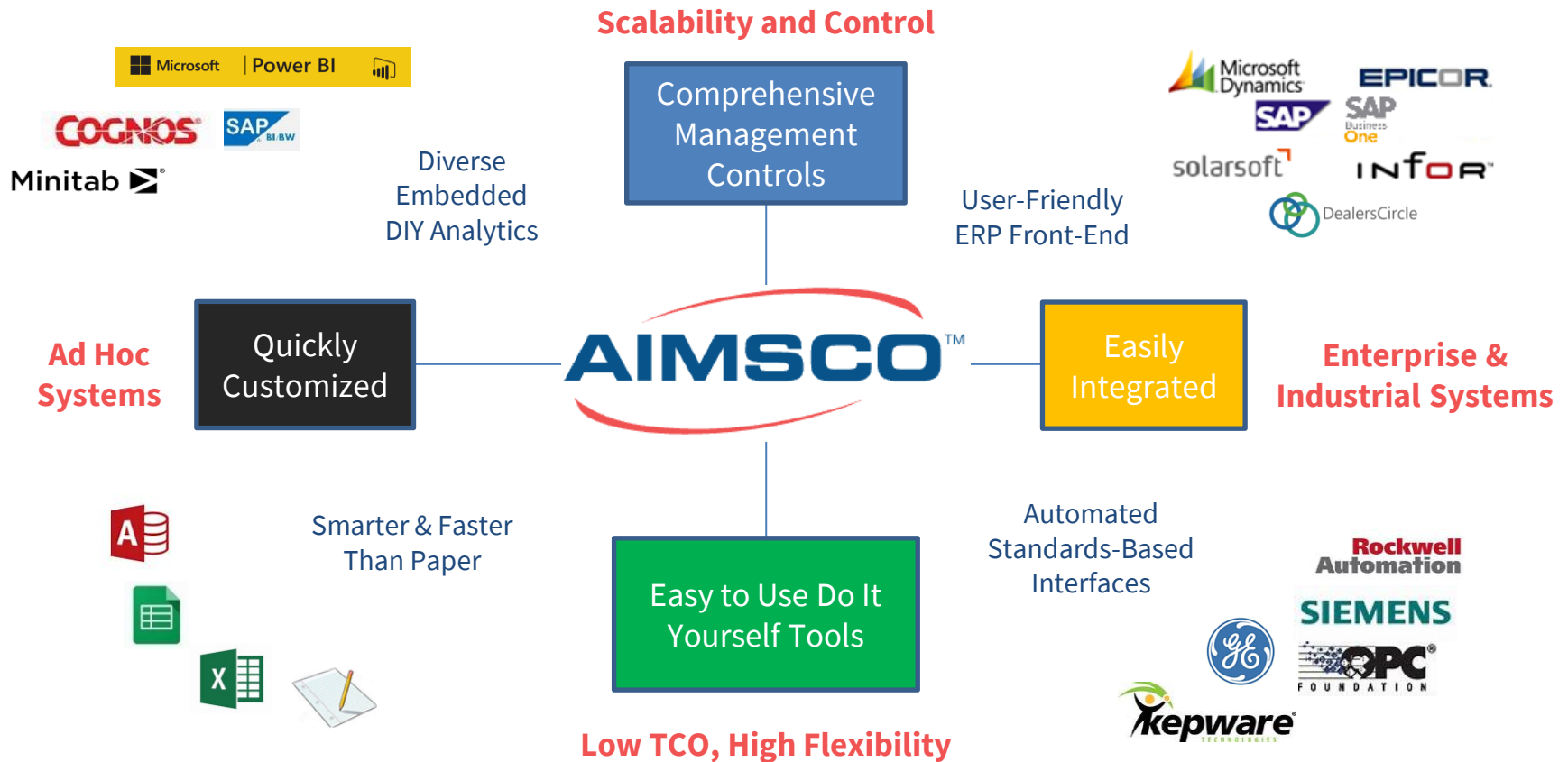
AIMSCO eChecksheets™ (eCS) no-code apps that provide a familiar data collection method for connected workers, while also taking advantage of enterprise and IoT data sources through AIMSCO Integrator™

AIMSCO Power Plant™ delivers unparalleled manufacturing intelligence insight with factory-focused features for self-service analytics leveraging our consolidated eCS repository, optimized for Microsoft Power BI



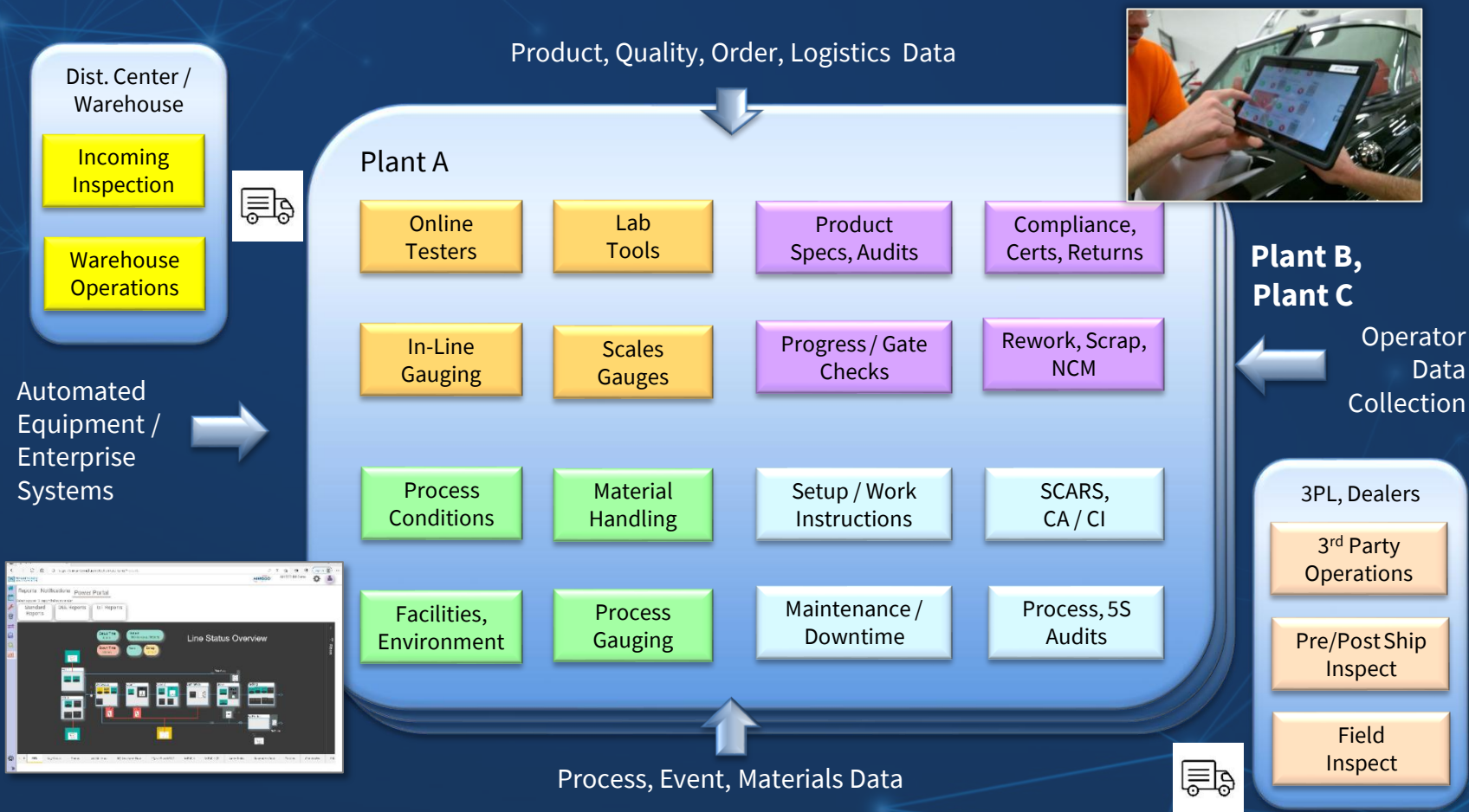
AIMSCO eChecksheets™, AIMSCO Power Plant™ and AIMSCO Integrator™ are trademarks of AIMSCO.
Any other product or company names given are for identification purposes only and may be trademarks of their respective owners.

AIMSCO Combines Enterprise Strength with DIY, Ad-Hoc Agility



Marine Applications of eChecksheets

Consolidate Paper-Based and Siloed Apps With a Comprehensive Operations Data Repository



The eChecksheet Advantage

- AIMSCO eCS are the leading digitized version of the industry standard method to collect a variety of production, quality, visual and process data in real time at point-of-use, eliminating paper and providing instant visibility
- Built with an expanding library of eCheckitems™ (eCI), eCS are authored and maintained by client key users to drive continuous improvement with agility
- eCS Managed Models easily maintain standard structures across multiple similar products
- eCI can be automatically populated by equipment interface (IoT) or enterprise / third party systems through standard web service interfaces
- eCS can be quickly deployed at a single site or across multiple plants, languages
- As a Microsoft FastTrack ISV Partner, AIMSCO eCS are optimized for Azure and integrate seamlessly with Microsoft Power BI® to drive advanced embedded analytics



Marine-Focused Applications

- In-Process Quality with Visual Heatmaps for Lamination, Gel-Coat
- Repair / Rework Sign-off Management
- Visual Production Schedule Display / Management
- Build Book Traceability
- Process Parameters, Performance Test Results
- Work Instructions with Document Management Integration
- ERP / Dealers Circle Integration
 - Order / Option-aware Inspections, Work Instructions
- Automatic ERP move transactions
- Mold Maintenance based on usage, defect rates, powered by Heat Map
- Spray Gun Maintenance
- Quality Alerts / ECN
- Messaging and Notifications
- Corrective and Preventive Actions / Continuous Improvement
- Incoming Materials
- Pre-Ship / Pre-Delivery / Post-Delivery Inspection
- Safety, Process, Product, Compliance Audits
- Equipment Integration (Gauges, Scales, Ovens,...)

eChecksheets: Faster-Than-Paper

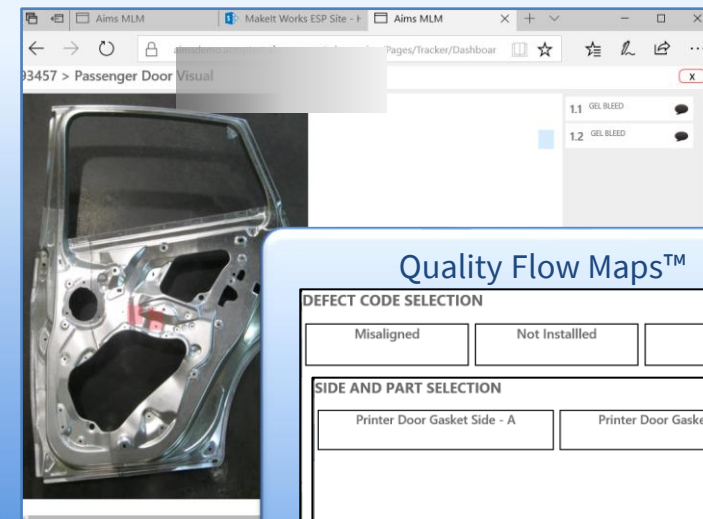
SUPPORT LEAN DATA COLLECTION

eChecksheets

The screenshot displays a web-based interface for data collection. It includes sections for 'Run Conditions' (2/2), 'Ambient Temperature' (21°C), 'Relative Humidity' (12%), 'Run Summary' (4/4), 'Job Run Time' (play/pause buttons), 'Crew Size' (5), 'Extruder Scrap' (21,000), and 'Recycle Material Consumed'. A 'Run Summary Report' table is visible at the bottom.

Part Produced	Part Description	Qty	Avg Net Wt	Total Wt	Yield
AZ 40010118	AZ 40010118	72 Rolls	4.40 kg	316.24 kg	86.6%

Image Quality Maps (IQ Map™)



Quality Flow Maps™

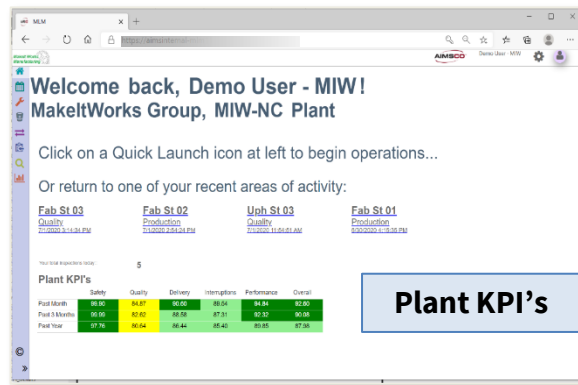
The screenshot displays a 'Quality Flow Maps' interface with two main sections: 'DEFECT CODE SELECTION' and 'SIDE AND PART SELECTION'. The 'DEFECT CODE SELECTION' section includes buttons for 'Misaligned', 'Not Installed', and 'Pinched'. The 'SIDE AND PART SELECTION' section includes buttons for 'Printer Door Gasket Side - A' and 'Printer Door Gasket Side - B'. At the bottom, there are 'Previous' and 'Next' buttons.

Automated, Standards-Based Interfaces

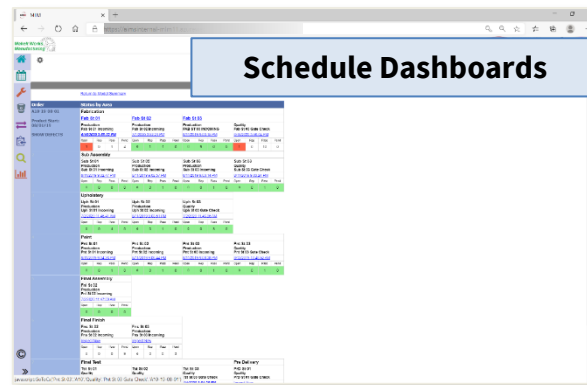
ERP, Equipment, PLCs, Testers, Gauges, Material Handling, Scanners,...

Comprehensive Analytics

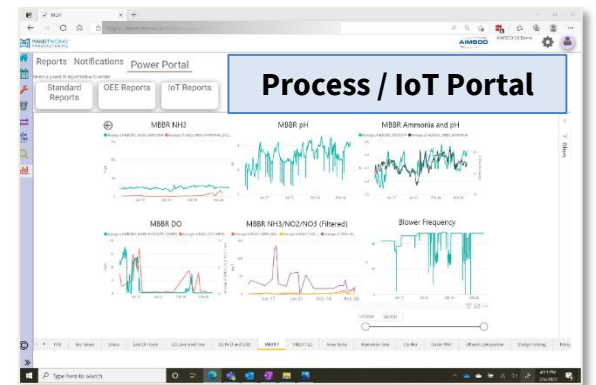
STANDARD, CUSTOM AND SELF-SERVE REPORTS, DASHBOARDS, SCORECARDS, PORTALS, AND SLIDESHOWS



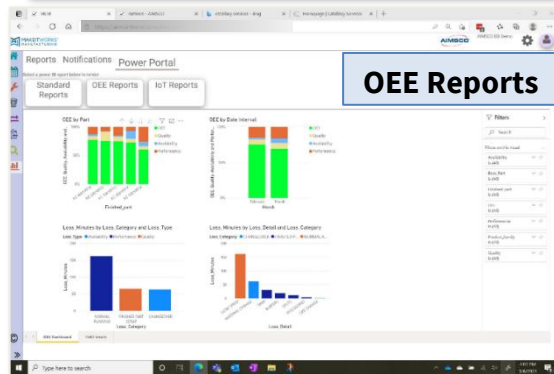
Plant KPI's



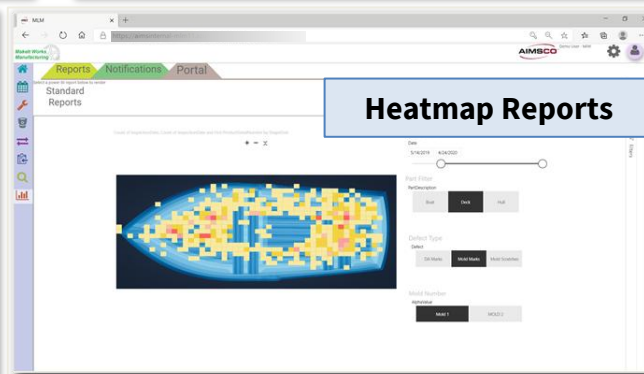
Schedule Dashboards



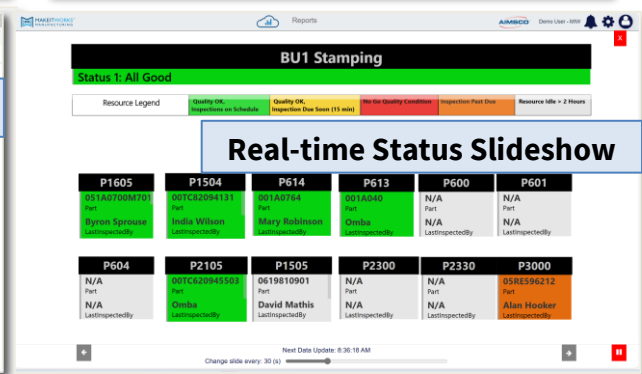
Process / IoT Portal



OEE Reports



Heatmap Reports



Real-time Status Slideshow

AIMSCO eChecksheets Bring IT & OT Together

ENTERPRISE GRADE INFORMATION AND OPERATIONS MANAGEMENT RESOURCES

Secure Microsoft Azure cloud-based platform

- Secure user access (Azure Active Directory / Office 365 SSO available)
- Dedicated database instances, application sites (production and test)
- Real-time network security monitoring and audits (Azure Security Center)
- High system availability (99.9% cloud, 99.999% cloud / edge hybrid)
- Edge (hybrid) / on-premise deployment and VPN tunnel options available
- Microsoft Azure FastTrack ISV partner, Azure Marketplace supplier

User Management / Support

- Enterprise portals – Power BI Embedded, On-line Enterprise Support Portal (ESP)
- Email / phone / online support; 24x7 option available
- User / group managed roles and permissions

Available Integration Options

- IoT / OPC / SCADA / Equipment / AutoID: Integration API's, connectors
- Reporting: SSRS / Power BI / Office (Excel, Word, PDF) / 3rd Party BI / Data Lakes
- ERP: Integration API's, Azure Data Factory, connectors, data lakes / warehouses

CASE STUDY – MARINE OEM

Scenario: Hand-written quality management using Excel-based forms. Stacks of finished good history records. High overhead for inspectors, data entry clerk and quality manager, slow report turnaround.

Goal: Improve quality levels, reduce inspection and paperwork overhead, get real-time reports

Solution: Implement AIMSCO eChecksheets apps for quality and maintenance management

- **Warranty:** Reduced warranty costs by up to 50%
- **Process:** Reduced inspection / rework overhead in all areas by 25%, patch area by 75%
- **Reporting:** Provided online real-time access to all inspection records and reports, unit progress through the floor including gig work-off
- **Responsiveness:** Alerts about active issues are delivered directly to operators on the shop floor. Email / text notification of critical issues sent to management, with tiered escalation
- **Plant and Equipment:** Identified previously unknown equipment-based root cause of highest rework category and instituted ongoing equipment maintenance with AIMSCO, reducing rework
- **Market Position:** Customer received top industry recognition, reduced warranty claims by 50%
- **Self Service:** Quality technician (non-programmer) maintains / enhances system part-time
No IT overhead due to cloud deployment – customer has no dedicated IT staff
- **Continuous Improvement:** No-code Power BI reporting tools help customer drive quality to next level, measure conformance with industry standards, involve suppliers, and link with field service / warranty

Payback: 4 months

Getting Started

MARINE LAUNCH IMPLEMENTATION PROCESS – SUMMARY OVERVIEW
TYPICALLY KICKS OFF WITHIN TWO WEEKS OF CONTRACT ACCEPTANCE

Project Phase Description	Estimated Duration	Client Resources	Description / Comment
Planning / Activation	2-5 days	Core Team: 4 hrs Mgmt Team: 1 hr Plant IT: 4 hrs	Up front planning and setup to support onsite training, define requirements for long lead time items, outline core system implementation timelines, plan for needed ERP / DealersCircle / IT integration.
Onsite Training	2-3 days	Mgmt Team: 4 hrs Core Team: 18 hrs	Onsite training, including management overview, hands-on Core team training, first-draft operations review w/ users.
Site / Data Preparation	15-30 days	Core: 80-120 hrs*	Primarily Core team / IT activity, supported by AIMSCO consultant online. Prepare eChecksheets & IT infrastructure including ERP / DealersCircle connection for initial line implementation. Duration depends on initial implementation scope, resource allocation.
Go Live / Stabilize	15 days	Core: 80 hrs	Transition from test to production, user training, reports confirm / expand

Estimated Duration – 34 to 58 days

****Turnkey Options Available to Reduce Client Core Team Efforts By Up To 50%***

Let's Transform Your Marine Operations Together



Ready to eliminate paper, boost quality, and gain real-time insights?

- Rapid Deployment in under 60 days
- Proven ROI with payback in as little as 4 months
- No-code tools for continuous improvement
- Seamless integration with ERP, IoT, and analytics platforms

 **Contact Us Today** |  **sales@aimsco.com** |  **www.aimsco.com** |  **Schedule a Demo**