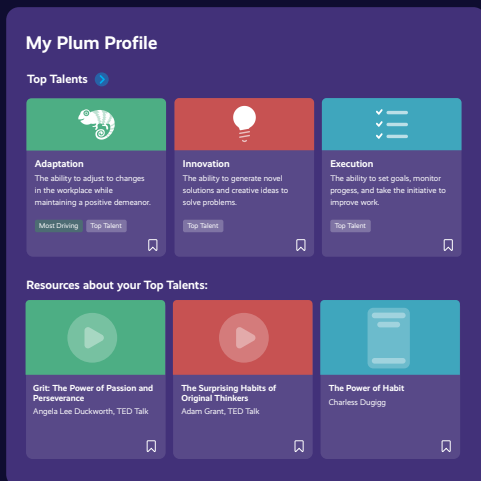


Plum for Employees

# BRING SOFT SKILLS TO THE CENTER OF YOUR WORKFORCE

**Unlock the data to develop, retain, and inspire your people.**

Hiring is just the beginning. Elevate your workforce with a soft-skills-powered approach that drives performance, retention, and career growth. Plum brings measurable insight into every stage of the employee journey from onboarding and employee development to internal mobility and leadership readiness.

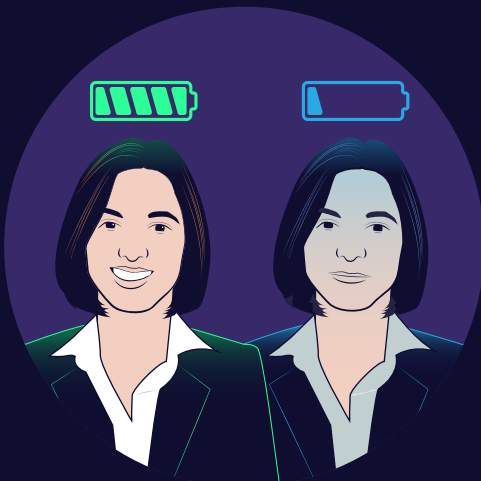


## Soft Skills drive success

Reveal the soft skills that drive high performance, beyond job descriptions and traditional evaluations.

### With Plum, you unlock:

- ✓ The critical soft skills your roles require for success.
- ✓ Science-backed insights to personalize development.
- ✓ Identify complementary strengths across functions.



## Onboard with confidence

Employees get a greater understanding of their innate capabilities, building confidence from day one.

### Turn these insights into impact with:

- ✓ Personalized onboarding roadmaps.
- ✓ Behavioral data that allows managers to build trust.
- ✓ Lowered risk of early turnover.

## Plum for Employees



### Decision Making

Making high-quality decisions based on limited information.

Drains Drives

#### Decision Making includes:

- Acting with confidence
- Expressing opinions and beliefs.
- Seeking to make decisions and direct others' actions.
- Speaking clearly and conveying positivity.
- Being self-assured, optimistic, and accepting of criticism.
- Evaluating consequences of decisions
- Generating alternative solutions

## Develop with purpose

Empower managers to craft employee development plans that align with each team member's natural Talents, not just their job titles.

### With Plum, managers can:

- Design development plans grounded in behavioral science.
- Spot future-fit opportunities based on individual Talents.
- Lead more purposeful conversations.

#### Select a Talent



#### Decision Making

Making high-quality decisions based on limited information.

#### Acting with confidence

- Expressing opinions and beliefs
- Seeking to make decisions and direct others' actions
- Speaking clearly and conveying positivity
- Being self-assured, optimistic, and accepting of criticism

## Unlock internal mobility

Uncover the soft skills and potential that traditional performance data can't see with the Plum assessment

### Make smarter internal moves like:

- Identifying high performers faster.
- Enabling meaningful career growth.
- Filling open roles faster with internal candidates.

## Why Leading Organizations Love Plum for Employees

"Plum is a practical and insightful tool designed for the workplace, offering employees a clear and accessible way to deepen their self-awareness. Its straightforward format makes it easy to understand and apply, empowering individuals to recognize their strengths, preferences, and growth areas in a meaningful way."

– Rose Scaringella-Cappelli  
Learning and Development Manager, Arup

## Plum for Employees

### Customer Success Team

Name	Top Talents	Teamwork	Innovation
Gina Mitchell	  		
Faizan Dunn	  		
Caroline Hinata	  		
Lindon Roth	  		
Youri Dekker	  		
Daniella Gaskie	  		
Tom Poston	  		

### Boost employee retention

When people understand how their strengths contribute to the bigger picture, they stay longer, perform better, and grow with you.

### Plum helps you accomplish this by:

- ✓ Spotting and surfacing each employee's top Talents.
- ✓ Personalizing development with clear growth paths.
- ✓ Maintaining alignment before engagement fades.



### Grow future leaders

Most leadership pipelines hinge on titles, tenure, or intuition. Plum uses behavioral and cognitive science to identify high-potential talent much earlier.

### Knowing an individual's drivers and drainers, you can:

- ✓ Spot hidden leadership potential early.
- ✓ Tailor development paths to each person's drivers.
- ✓ Build a future-proof talent pipeline.

### Turn People Insight into Business Impact

Plum for Employees give you scalable, science-backed data to fuel workforce decisions. From talent development to performance enablement, our assessment empowers all your employees to understand where they shine and where they can grow next.

Bring visibility, purpose, and opportunity to every corner of your organization.

**plum** The durable skills company.