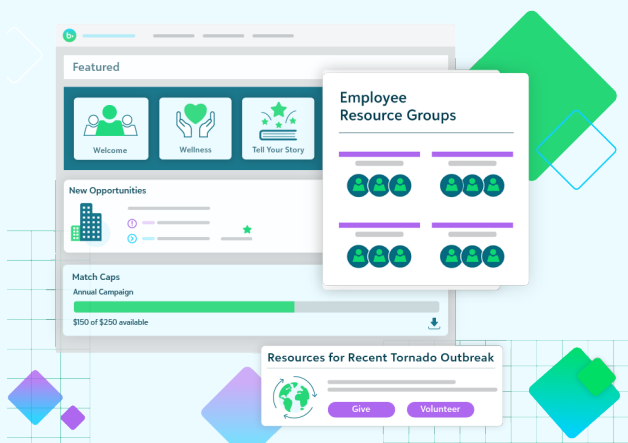


YourCause™ Solutions

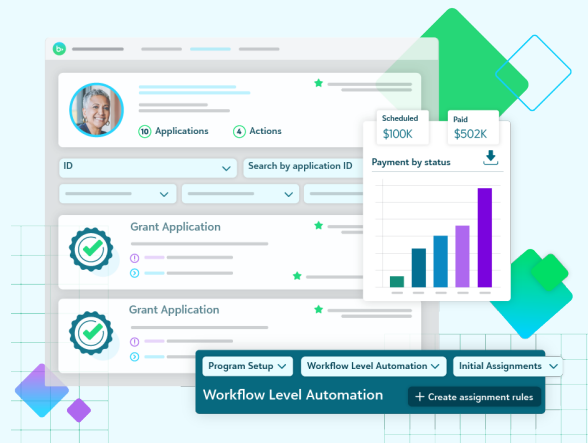
Centralized Social Impact for Companies

With YourCause from Blackbaud™, managing and showcasing your organization's social impact has never been easier. Our innovative employee giving, volunteering and grantmaking solutions are backed by the most robust reporting available in the market and customer support resources designed to help you save time, expand your impact and exceed your goals.



Engage your employees in giving and volunteering with **CSRconnect**

26 Languages
Global Charity
Database
Integrated
Reporting



Simplify your community investment efforts with **GrantsConnect**

Engage Employees

- ✓ Volunteering, including Skills-Based and Board Tracking
- ✓ Giving, including Credit Card, Payroll, Matching, and Offline
- ✓ Reward Employee Participation
- ✓ Complimentary Employee Groups Functionality

Manage Grants

- ✓ Applicant Portal
- ✓ Workflow Automation
- ✓ Robust Communication Tools
- ✓ Manage Multiple Budgets and Multiple Programs
- ✓ Payment Distribution

Show Your Impact

- ✓ Complimentary Impact Dashboards
- ✓ Generative-AI Assistant
- ✓ 55+ Standard Reports
- ✓ Integrated Reporting between Solutions
- ✓ Industry Benchmarking and Executive Business Reviews

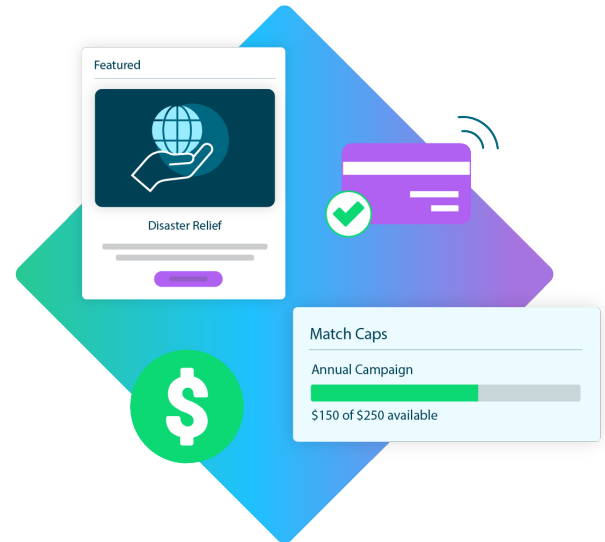
Learn More

Consolidate your technology, maximize your impact, and get the support you deserve.



When you work with us, you'll find that there is an entire customer experience engine designed to maximize the value of your investment with our products. **We're more than a platform. Click to learn more on how we support our clients!**

CSRconnect's Giving Manager allows employees to easily engage with their preferred charities, find new charities to engage with through our powerful search and filtering tools, and participate in any focused giving campaigns your organization promotes- including disaster relief and peer-to-peer fundraising. Users can monitor their donations and matches through an intuitive donation history dashboard that also provides maximum visibility into the payment distribution process.



CSRconnect's Volunteer Manager provides comprehensive and configurable features to manage and encourage participation in volunteer programs. Users can quickly find and register for volunteer events, manage their skills profile and find skills-based projects, create recurring hours, and participate in volunteering incentives like volunteer time off and dollars-for-doers.

GrantsConnect is a highly self-serviceable platform, and provides clients with all the tools for grant lifecycle management. Its user-friendly design allows clients to efficiently manage their grant programs with tools like automated workflows, language and currency conversion, communication tools, and so much more. With the ability to manage multiple programs, budgets, and funding sources like cash vs. in-kind, GrantsConnect truly is a one-stop shop for managing community investment programs.

