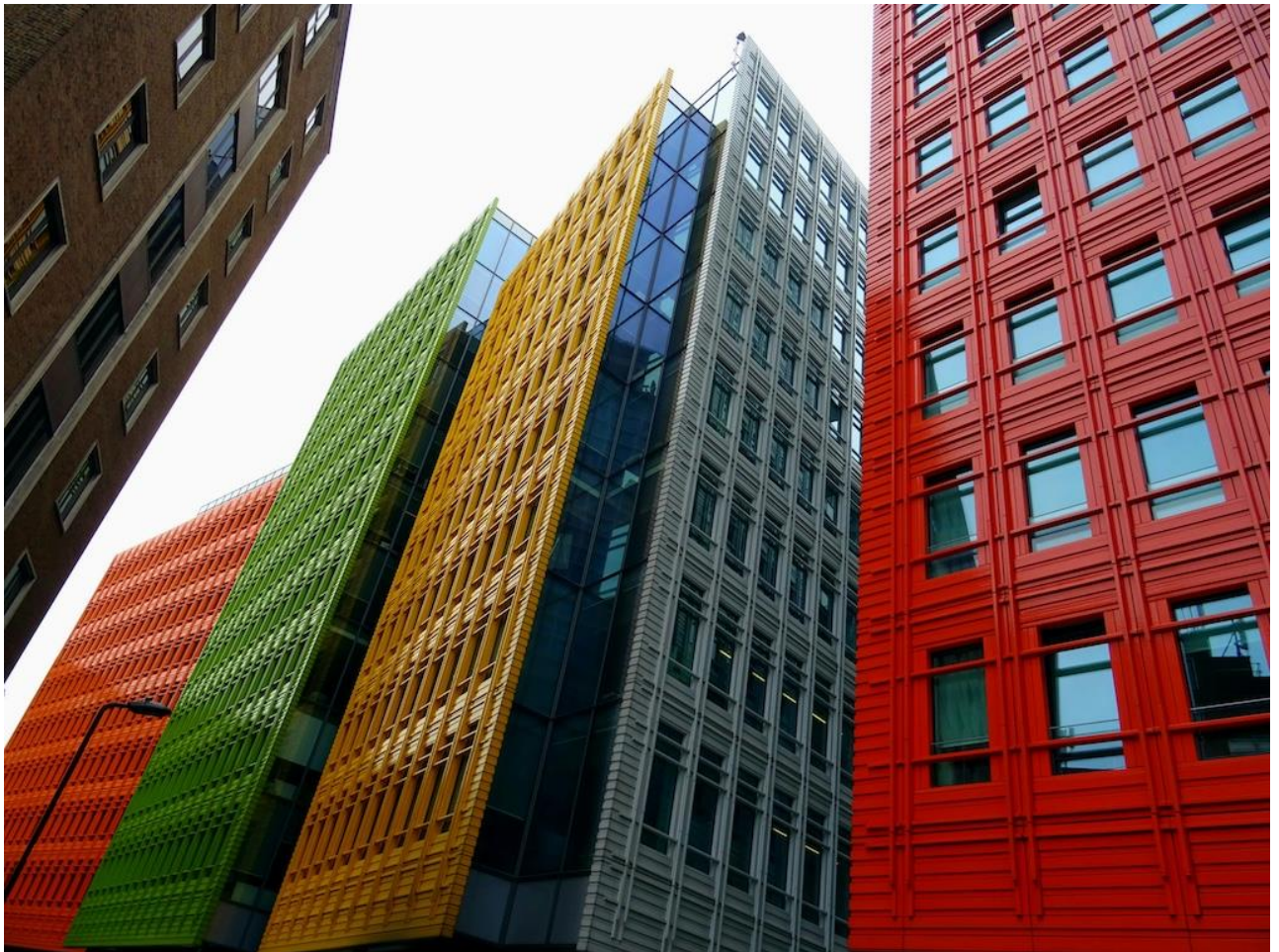


# EFS DataHub Case Study

Unlocking Enterprise Intelligence with SCIKIQ



## Client Overview

Client: EFS Facilities Services

Industry: Facilities & Workforce Management

Project Scope: Creation of Data Hub

Integration of 11 enterprise applications, creation of Employee 360, Procurement 360, and Finance 360 views

## The Challenge

EFS was running operations across 11 disconnected enterprise applications that generated data at scale but lacked a unified view. Key issues included:

- No enterprise data model to support unified insights across HR, procurement, and finance
- High cost of technology change and slow integration processes
- Complex data governance, data quality, and security management
- Inability to scale or generate insights across departmental silos

### EFS Datahub Project – Data Landscape Complexity



## The Solution

SCIKIQ delivered a no-code Data Fabric platform that provided:

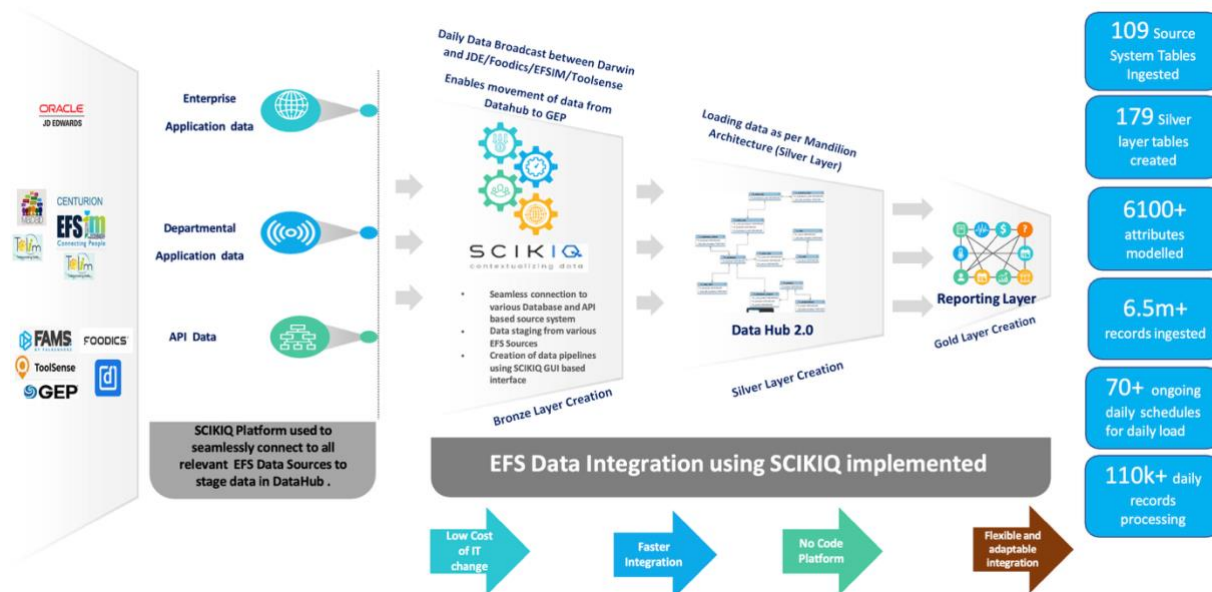
- Seamless connections to databases and API-based source systems
- Staging of raw data from EFS's core applications
- GUI-based data pipeline creation
- Integration of interdepartmental data to create unified 360° views (Employee, Procurement, Finance)
- Daily data broadcast between systems (e.g., Darwin ↔ other platforms)

- GEP system integration for real-time procurement insights
- Custom integrations built by the SCIKIQ team to extract and refine data from legacy systems for actionable use

## Implementation Highlights

- 109 source system tables ingested
- 6100+ attributes modeled
- 6.5M+ historical records processed
- 110K+ daily records processed
- 70+ daily data load schedules enabled
- Enterprise Data Model built for multi-phase implementation

## The Outcome



- Faster integration across enterprise systems
- Low cost of IT change through SCIKIQ's no-code approach
- Mandilion Architecture enabled: Employee 360, Supplier 360, Procurement 360
- Phase 1 fully supported by SCIKIQ's data experts, who created custom connectors and refined legacy data pipelines
- Phase 2 executed independently by EFS — demonstrating SCIKIQ's intuitive UI, the EFS internal data team was able to implement ongoing use cases using their own analysts and engineers

- Foundation for Data Hub 2.0 — extensible and scalable
- 

## Why SCIKIQ Made the Difference

SCIKIQ transformed EFS's scattered data landscape into a connected, intelligent platform. By offering rapid deployment, deep connectivity, and user-friendly data modeling, EFS now operates on an AI-ready, scalable architecture built for automation, operational efficiency, and better decisions.

Unlike traditional integration projects that demand months of effort and heavy IT intervention, SCIKIQ enabled:

- Rapid data onboarding without disrupting operations or requiring full replatforming
- Out-of-the-box connectivity to diverse legacy and modern systems using a plug-and-play approach
- Enterprise data modeling at scale through visual, no-code interfaces that business and tech users could collaboratively manage
- Self-service enablement — empowering the EFS team to take control of their data journey from Phase 2 onward without reliance on external consultants
- Future-proof architecture designed for ongoing analytics, automation, and AI readiness

By simplifying complexity, accelerating outcomes, and democratizing data access, SCIKIQ positioned EFS for long-term agility and competitive advantage.

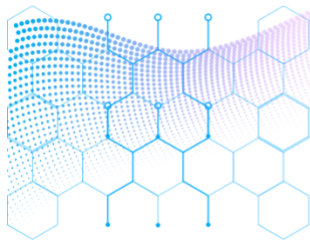
By offering rapid deployment, deep connectivity, and user-friendly data modeling, EFS now operates on an AI-ready, scalable architecture built for automation, operational efficiency, and better decisions.

---

SCIKIQ is more than a platform — it's your Data Hub, AI Layer, and Nervous System. All in one.

 Visit: [www.scikiq.com](https://www.scikiq.com)

 Contact: [sales@scikiq.com](mailto:sales@scikiq.com)



SCIKIQ

The AI Readiness Layer for Modern Enterprises

Build Your Data Foundation  
Launch AI at Speed

