

CloudEASE

Parking System Control in the Cloud

The Parking Management Software is called CloudEASE

- Easily and quickly control all aspects of the parking system from the Cloud.
- View transaction counts, ticket status, spaces available counts, proximity RFID access control usage.
- Scale from a single parking laneway to many laneways across multiple garages.
- Configure complex parking rate structures, validations, discounts, coupons.
- View real-time machine operational status, including live screen view.
- Incorporate proximity RFID access control credentials (access permissions, usage control) & holders (monthly parkers, employees, etc.).
- Generate reports, export data to Excel or CSV for further manipulation or integration.
- Audit trails may be printed at stations to enhance cash controls.
- View detailed system logs and monitor via email/text alerts.
- Create granular user permissions to limit access.
- Automated data back-ups with redundant architecture.
- Integrate with third-party systems.
- PCI compliant.

Validation Solutions & Passes

- Discount (amount, time, percentage) via:
 - On-line validation stations
 - Web-based validation
 - Coupon paper chaser tickets or stickers
- Automated pass sales.

Reports

View real-time data. Generate reports by start + end date/time. Export data Excel or CSV

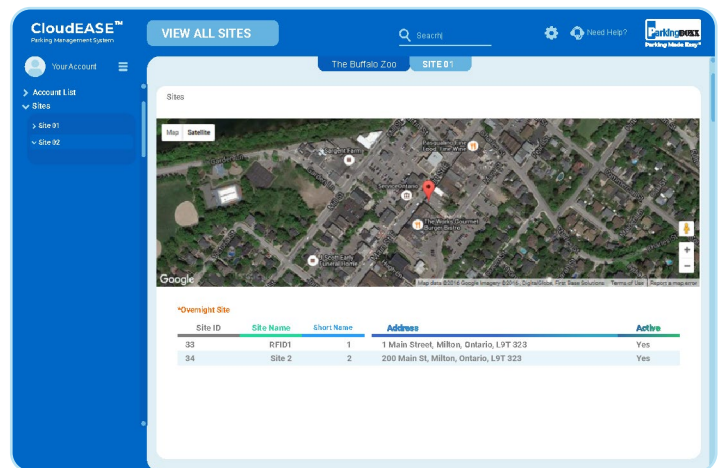


CloudEASE™

CloudEASE Dashboard



Site Map



Complex Rate Configuration, Update Real-time

Rate Details History

Rate Name* 3\$ per hour ?

Description

Rate Structure* Max Price ? Leave Blank if no max.

Priority	Rate	Duration	Time Frame	Periods
1	\$3.00	1	Hours	6
2	\$6.00	1	Hours	6

Rate Available Days or Dates - Please Select:

Days ☒ Sun ☒ Mon ☒ Tues ☒ Wed ☒ Thu ☒ Fri ☒ Sat

Dates

Rate Available Times - Please Select:

Start Time 00:00:00 End Time 23:59:59

Receipt Setup/Preview Online

Receipts History

Header

Lines before header: 0 ?

Header line 1: Thanks for Parking ?

Header line 2: with Parking BOXX ?

Header line 3: ?

Lines after header: 0 ?

Print

Receipt type: Two column ?

Place on dash: ☐ ?

Place on dash TEXT: ?

Expiration Time: ☒ ?

Expiration Date: ☒ ?

License/Space: ☒ ?

Extend Time Code: ☒ ?

Pay Time & Date: ☒ ?

Parking: ☒ ?

Coupon Value: ☒ ?

Taxes: ☐ ?

Total Due: ☒ ?

Total Paid: ☒ ?

Receipts lines example:

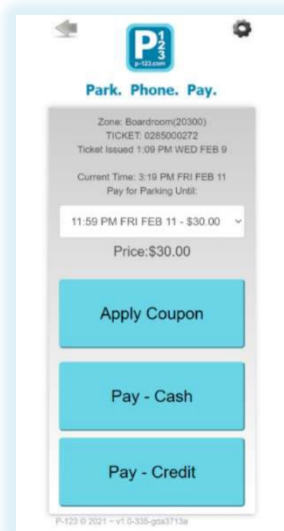
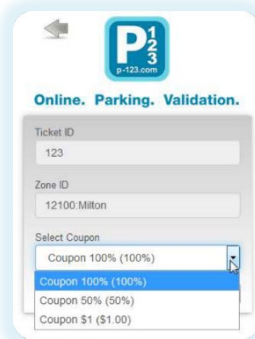
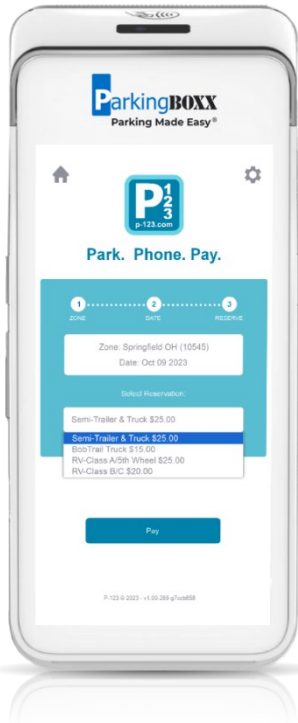
```

Thanks for Parking
with Parking BOXX
Expiration Time/Date:
2:33 PM
SEP 05 2014
SPACE #: 32
EXTEND TIME#: 6586

Pay Time/Date: 11:34 AM SEP 05 2014
Parking: $8.00 Machine: machine01
Coupon: -$1.50 Receipt: 0024019917
Due: $6.50 Pat Type: Credit
Paid: $10.00 Card: MASTERCARD 0542
Auth: 22222

Have a Wonderful Day :)
  
```

Apps for the Operator



- Validation (Handheld or Web)
- Ticket Rating
- Point of Sale (POS)
- Mobile CloudEASE

P-123 Apps for the End User

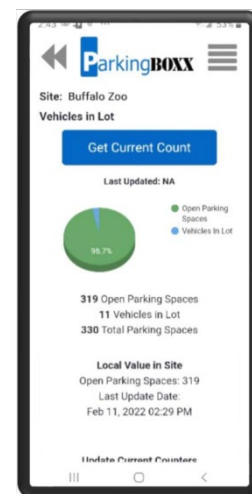
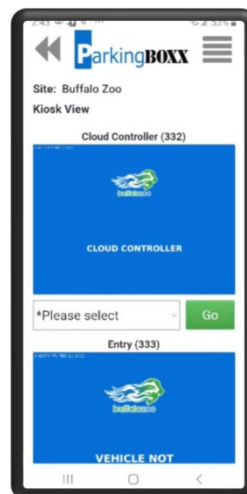
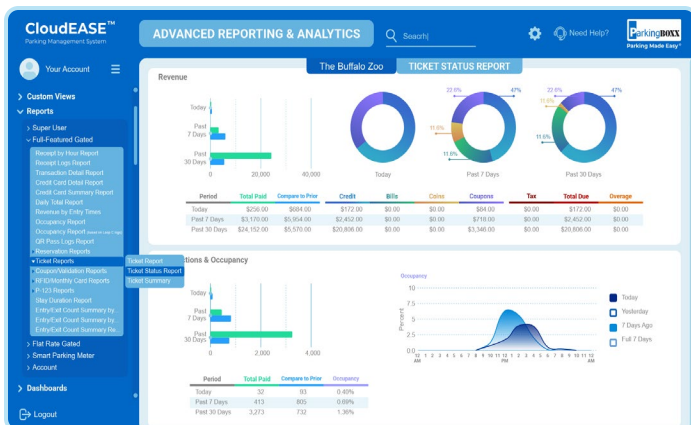


- P-123 Mobile Pay
Scan Ticket on Phone to Pay Request Receipt
 - P-123 Text to Pay (Q3 2022)
 - P-123 Reservations
Pre-purchase parking reservations.
 - P-123 Monthly Card Renewal (Q4 2022)
 - Receipt Email Request for Any Paid Ticket
- Plus Integrate with any third-party aggregator!***

Software & Network Highlights

CloudEASE Platform. Unlimited users in the Cloud!

Mobile version for access via cell phone.



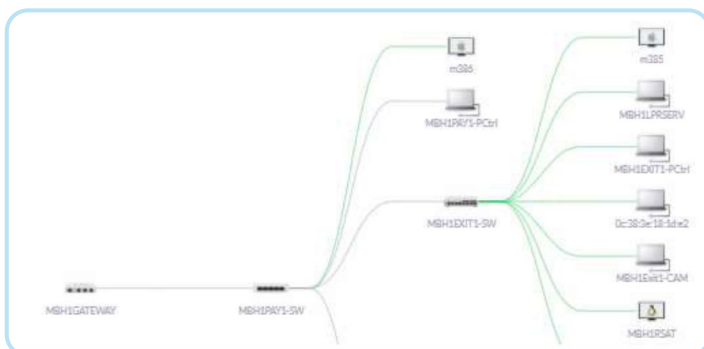
Remote Control interaction with machines

Backup 4G Network and Spare Part Kits

Remote Power Cycle of Kiosk or individual components

Enhanced Alerts and API Access

Network Management and Monitoring




ACTIVITY DOWN	ACTIVITY UP	UPTIME
233 MB	148 MB	66d 21h 41m 35s
75.1 MB	17.8 MB	22d 17h 48m 42s
224 MB	173 MB	204d 16h 21m 15s
209 MB	171 MB	22d 17h 48m 55s
205 MB	159 MB	6d 5h 57m 29s
5.7 GB	147 GB	28d 2h 4m 44s
60 MB	5.95 MB	48d 12h 41m 28s
5.72 GB	158 GB	28d 2h 4m 56s

	ACTIVITY DOWN	ACTIVITY UP	UPTIME
—	233 MB	148 MB	66d 21h 41m 35s
—	75.1 MB	17.8 MB	222d 17h 48m 42s
—	224 MB	173 MB	204d 16h 21m 15s
—	209 MB	171 MB	222d 17h 48m 55s
—	205 MB	159 MB	6d 5h 57m 29s
—	5.7 GB	147 GB	28d 2h 4m 44s
—	60 MB	5.95 MB	48d 12h 41m 28s
—	5.72 GB	158 GB	28d 2h 4m 56s

Camera & LPR Options

Remote Connection



ILG1NVR
UCK-G2-PLUS 2.1.11


Storage Utilization 100%

1.94 TB 1080p x8 4K x0

Storage Capacity 104d 18h 32m

Earliest Recording Oct 29, 2021 / 3 months ago


Recent Detections All Types View All Events



Live Views Default (8 Cameras)

Events 307 Last 24h / 399 Avg

ALL SMART DETECTION MOTION DETECTION



All Sites
Most Recent Plate Group

Site	Camera	Plate Number	Vehicle
MBH1LPRSERV	MBH1EXIT1	8HSF786	Black Motorc
MBH1LPRSERV	MBH1EXIT1	8CBL339	Honda

Honda

