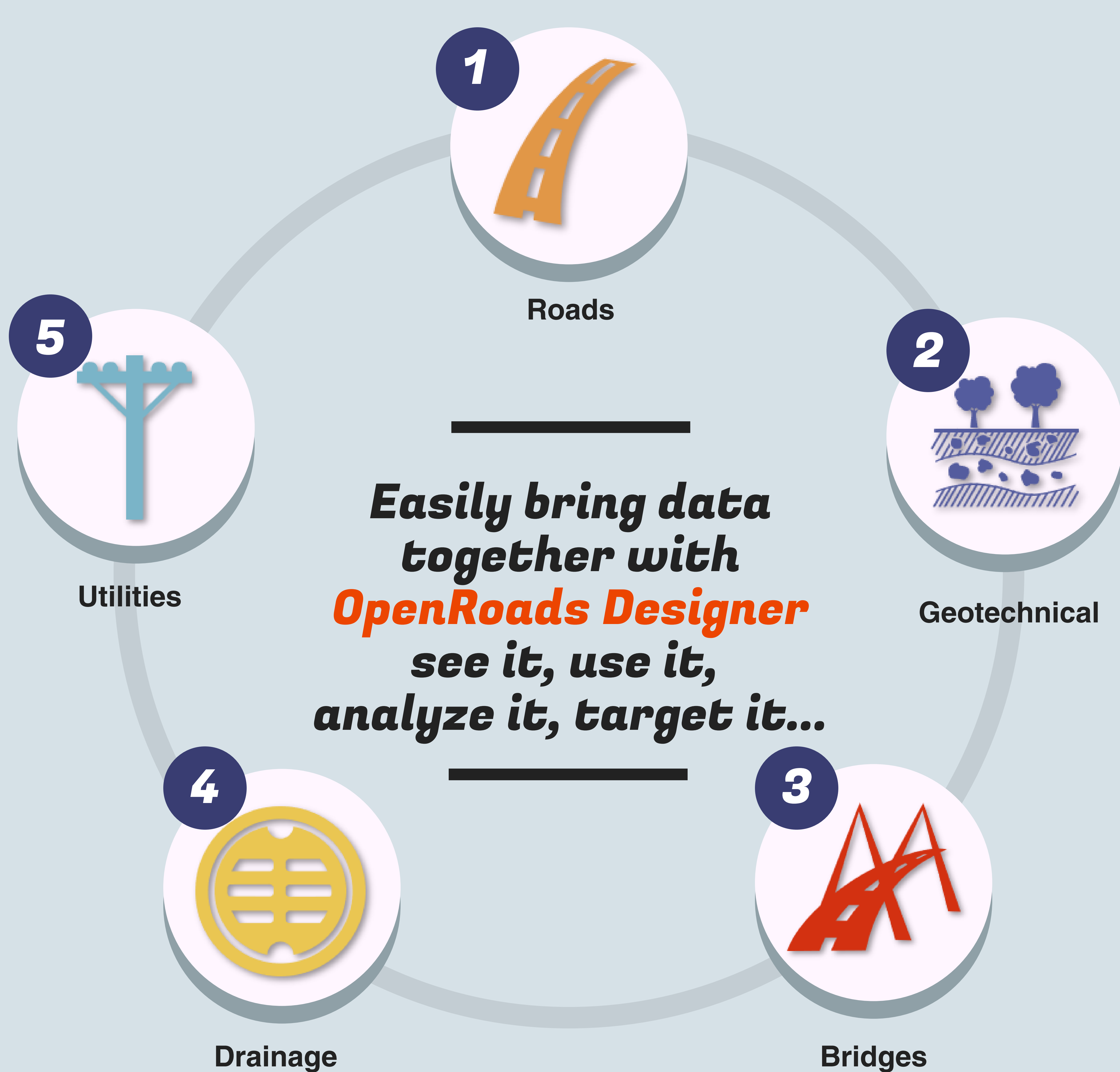


INTEGRATING DATA FROM MULTIPLE DISCIPLINES



PLAYING IN THE SAME SANDBOX

Whether you are modeling roads, roundabouts, bridges or ponds, at some point you will need to integrate them together into the same model.



DESIGN BENEFITS

Integrating data from multiple disciplines into a composite single model allows you to get a full view of how all the data will interact earlier in the project.



Can I build it this way?

Do I have any conflicts?

Do I need to make changes?



BUSINESS BENEFITS

Benefit #1 INCREASE PRODUCTIVITY

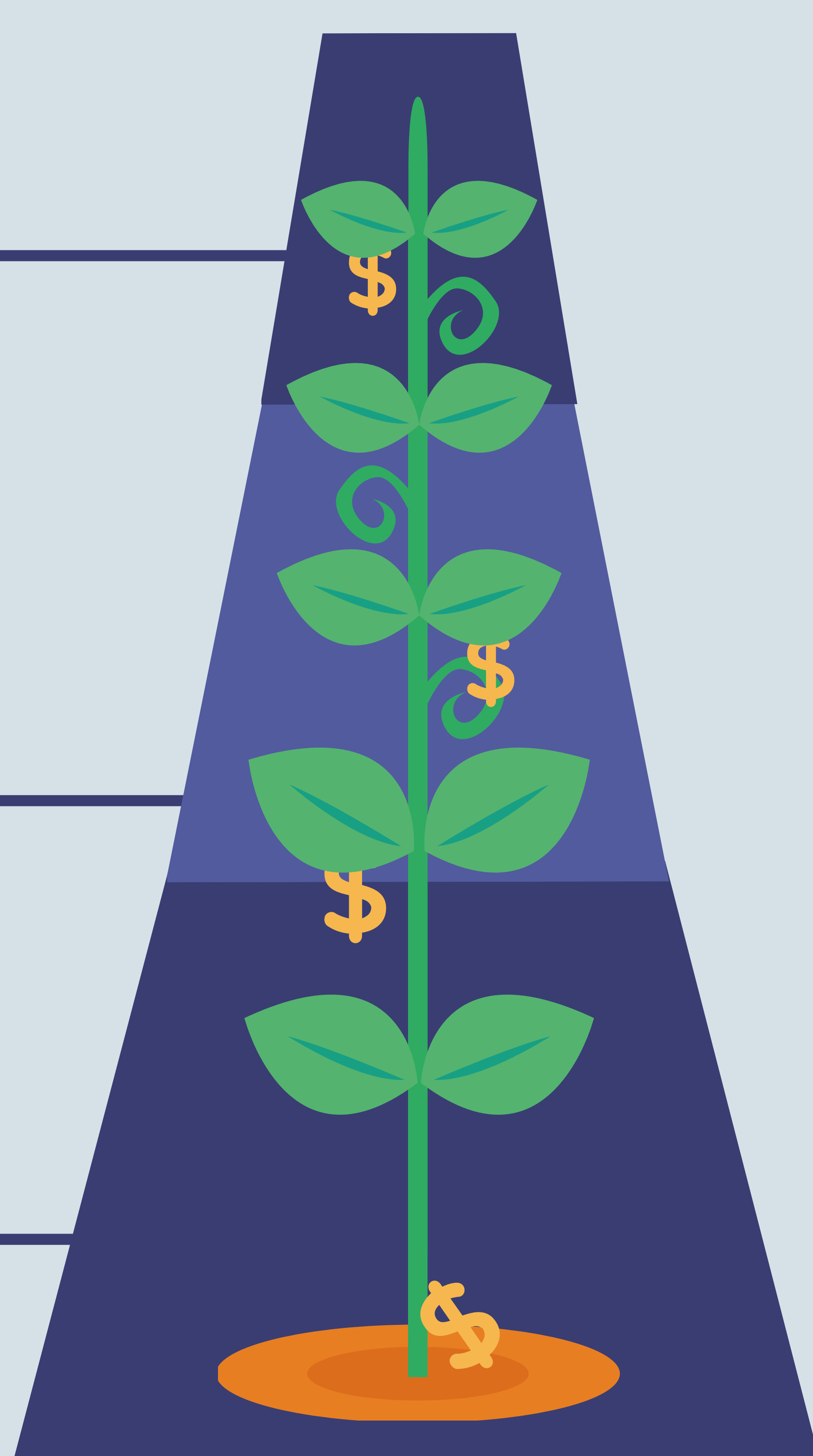
Deliver projects faster with the ability to see and use everyone else's data within the confines of your own application.

Benefit #2 IMPROVE ACCURACY

Reduce risk, errors, and omissions prior to construction.

Benefit #3 LOWER COSTS

Minimize changes by making better engineering decisions early in the project.



LEARN MORE FROM DERRICKE GRAY AT HIS UPCOMING WEBINAR

<http://bit.ly/openroadsintegratedatawebinar>

GET A SNEAK PEEK

<http://bit.ly/openroadsintegratedata>

