

Prescription management

Rx

MICRO
Merchant Systems

PrimeRx

Pharmacy Management System

Prevent Dispensing errors...
ensure smooth operations
and profitability

*TIDC food pm
cough*

AS WRITTEN

Features on reverse side

Micro Merchant Systems, Inc.

55 Jericho Turnpike, Suite 301 • Jericho, New York 11753
516.408.3999 • 866.495.3999 • www.micromerchantsystems.com

PrimeRx

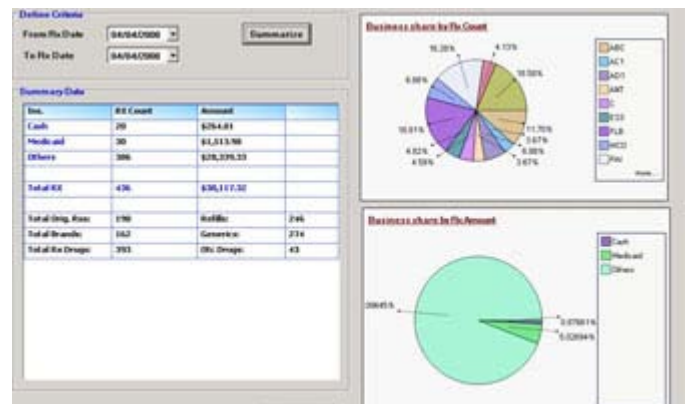
Some of the salient features are:

- Support for **Multiple Language SIG**, including Spanish, Chinese, Korean, Russian and pretty much all the languages that is supported by Windows Operating System.
- **Drug images** on filling and Verification screens to minimize dispensing errors.
- Integrated Support for Electronic Rx. **Certified by SureScripts**. Ability to fill New Rx as well as send Refill Requests electronically
- **Batch unlimited Rx from different patients and insurances for ultimate flexibility** in transmission.
- **Export Reports** in various formats including MS Excel.
- Alerts you for **UNDERPAID Ingredient Cost**.
- A comprehensive integrated **Security module** for ultimate control over user actions.
- A completely integrated **Inventory Module** that interfaces with wholesalers of your choice.
- **Nursing Home** Module with all required reports.
- A full featured **Accounts Receivable** Module (House Charge) that integrates with **PrimePOS**.
- Experience our **superior level of customer service** by phone or online chat.
- **Profit Watch Tool** to track under paid claims with one step reverse and re-transmit.
- A complete **Refill Management** suite with Refill Queue to track all due refills with ability to process them instantly.
- Fill Rx without use of Mouse.
- Use of **Bar Code Scanner** for NDC verification as well as Security Over-ride.
- **Customer Loyalty Program** available with Custom Printed Cards for the pharmacy.
- Supports **all Printers** recognized by the Operating System including **Thermal Printers**
- **340 B Module**
- **Electronic Reconciliation** – **PrimeRx** can read and apply Electronic Remittance Files
- Internal **Fax Module** so that Refill Requests can be sent from **PrimeRx** directly to the doctor's office.
- **Compound Templates** can be created and saved so that they can be used again to fill other Rx
- **Options to control collection of Patient COPAY**
- **WORKFLOW** Module – **PrimeRx** has a fully integrated Workflow module to prevent dispensing errors
- **Pharmacist Verification** – A separate option just for pharmacist so that complete attention is focused on verifying the Rx and making sure that the right medication is being dispensed to the right patient while maintaining profitability all the time



- **Drug Pickup Verification** – Technicians can verify that the right NDC is being packaged with the right Rx.
- **Tag and Track Rx** – Option to dynamically create different follow up tags which can be tagged to the Rx so that it can be followed up a later time. It will also give you complete information like the date and time the Rx was entered, packaged, verified and picked up by the patient.
- **My Store** – This option shows you a snapshot of how the pharmacy is fairing. It gives **Top Performers by Patient, Prescriber, Drug and Insurance**.
- **PrimeRx** interfaces with all in house products seamlessly such as **PrimeESC** (Electronic Signature Capture), **PrimePOS** (Point of Sale), **PrimeDELIVERY** (Comprehensive Delivery Module), **PrimeWEB** (Customized Web Site for Pharmacies), **PrimeDMS** (Document Management System)
- **PrimeRx** is completely modularized for **complete Pharmacy Automation**. It communicates with multiple vendors like ScriptPRO, Parata, AutoMed, Innovate, Kirby Lester and pretty much all other manufacturers to ensure automation in your pharmacy.
- Cost and AWP updates from your wholesalers are available as well... **PrimeRx** interface's with wholesalers like Kinray, HD Smith, Cardinal, McKesson, Amerisource Bergen so that it can update the cost / AWP applicable to your pharmacy so that you can find out how profitable is your business.
- **Bin Management** – This feature gives you the ability to scan Rx and Bins and relate them together for easy retrieval of scripts when the patients come in. It also gives you Rx not picked up so that they can be removed from the Bin and returned to Stock.

Plus many more features...



For further information regarding **PrimeRx** or other fine Prime line software products contact Micro Merchant Systems, Inc. at 866.495.3999 or visit the company website at www.micromerchantsystems.com.