



How Numetric Restores Confidence in Asset Data and Streamlines Cost Estimates

Your Department of Transportation relies on you to provide dependable asset data and concept-level cost estimates in a timely manner for hundreds or thousands of projects. Unfortunately, you don't have the confidence that you should in your asset data and cost estimates. Here's why.

THE PROBLEM: STUBBORN ASSET DATA IS BOGGING DOWN INFORMATION SHARING AND COST ESTIMATES

You've spent millions of dollars gathering asset data. So why is it so hard to provide reliable asset data and cost estimates? Because:

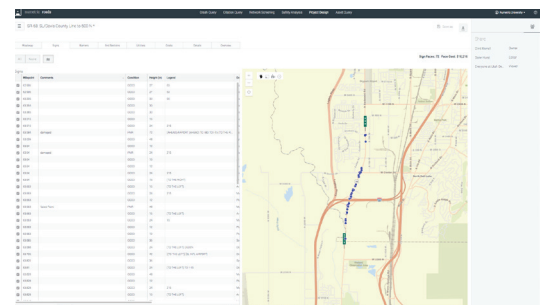
- Your asset data was likely gathered in various formats via different parties and could be stored in as many as 10 different systems.
- Only those with programming expertise can extract data from your systems.
- You are inundated with requests from internal and external stakeholders for asset data and concept-level cost estimates for thousands of projects.
- Even for experts, data requests can take hours to fulfill while cost estimates can take weeks, creating a bottleneck for data access.

The result: With so many projects in play, engineers struggle to share asset data in a timely manner. Even then, engineers can't have full confidence in the asset data or the cost estimates based on it and must spend hours traveling to the site to verify and re-verify. In this situation, your DOT lacks a single source of truth, relies heavily on anecdotes and institutional knowledge, and struggles to find common ground in the absence of reliable data. Ultimately, inaccurate asset data and estimates tend to result in costly project overruns and funding issues down the road.

THE SOLUTION: ORGANIZE AND STREAMLINE THE SHARING AND ANALYSIS OF ASSET DATA WITH NUMETRIC'S DESIGN SUITE

This starts by partnering with Numetric's data experts to prepare, combine, structure, and manage your asset data to restore its reliability. Then, with your data in order, you are ready to use **Numetric's**

Design Suite to streamline the sharing of asset data with stakeholders and the generation of concept-level cost estimates for pavement preservation and rehabilitation projects, via **three powerful apps.**



"Numetric is easy to use, fast, and intuitive. It helps my organization quickly query through our inventory of over 100,000 assets, merging multiple datasets of asset data, roadway data, and others. It provides a seamless experience for using data to make data-driven decisions regarding agency assets."

STAN BURNS

Fmr. Director of Asset Management
Utah Department of Transportation

ASSET QUERY

No programming expertise is required to use this robust GIS interface not just to view your state's roadway assets, but also to filter and drill into the attributes of each one—in seconds, instead of days.

- **Full text search** allows you to break out assets by dozens of attributes, like route, road segment, age of asset, and more.
- **Spatial search** lets you simply highlight a section on a map to zero in on asset data in that specific area.
- **Flyout details** let you dig into images and details of individual assets to determine the history and condition of the asset.

Best of all, you can give any stakeholder access to the Asset Query App and trust that it is intuitive enough for them to obtain their own data and perform their own analysis, without having to wait for your assistance.

PROJECT DESIGN

Numetric's Project Design App allows engineers and project managers to eliminate weeks of work gathering and analyzing data to generate concept-level cost estimates for pavement preservation and rehabilitation projects.

- **Custom quote builder** lets you apply multiple treatments or replacements to a specific project location based on road data to generate a detailed quote.
- **Road attribute review** features allow you to check out any signs, barriers, end sections, or utilities via rich data and images.
- **Automated calculations** take into account other costs like engineering, traffic control, mobilization, and inflation.

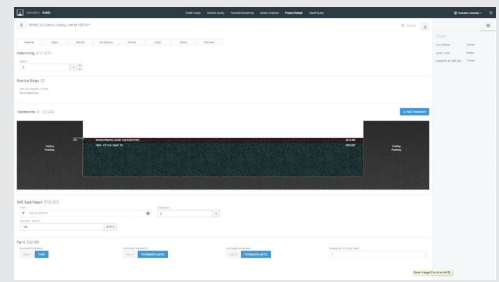
The end result is a detailed, data-driven concept-level cost estimate you and your team can have confidence in when it comes time to allocate budgets and report performance—and it took you only minutes, instead of weeks.

WORKBOOKS

Your stakeholders' data needs are as diverse as they are. This customizable app lets you provide just the right kind of data experience for each of them.

- **Easy, cloud-based access** means that you can give anyone inside or outside your DOT the ability to interact with the data themselves, while keeping your data safe and secure.
- **Flexible settings** let you provide only static reports and dashboards to some stakeholders, while you allow other stakeholders to drill into and explore the data.

You and your team are relieved from manually disseminating asset data to every requester, and access to reliable asset data means your DOT's can proceed with its projects with full confidence. It's a win-win.



"The Numetric platform is helping us close communication gaps. We are able to see data and streamline the quality control process."

GORO SULJOADIKUSUMO

Planning Survey Engineer

Hawaii Department of Transportation

Restore your DOT's confidence in asset data

Numetric was built for Department of Transportation engineers by Department of Transportation engineers. It is dedicated to empowering DOTs to be more efficient, data-driven, and focused on making their roadways better and safer, via a host of SaaS applications and data services made exclusively for DOTs. To learn how Numetric can unlock your asset data and make your cost estimates more reliable, **sign up for a custom demo at numetric.com.**